

Product datasheet for **AP21085PU-M**

CREB1 Rabbit Polyclonal Antibody

Product data:

Product Type:	Primary Antibodies
Applications:	IF, IHC, WB
Recommended Dilution:	Western blot: 1/500 - 1/1000. Immunohistochemistry on paraffin sections 1/50 - 1/200. Immunofluorescence: 1/50 - 1/200.
Reactivity:	Human, Mouse, Rat
Host:	Rabbit
Clonality:	Polyclonal
Specificity:	This antibody detects endogenous levels of CREB-1 protein. (region surrounding Lys236)
Formulation:	Phosphate buffered saline (PBS), pH 7.2. State: Aff - Purified State: Liquid purified Ig fraction Preservative: 0.05% sodium azide
Concentration:	1.0 mg/ml
Purification:	Affinity chromatography (> 95% (by SDS-PAGE)
Conjugation:	Unconjugated
Storage:	Store undiluted at 2-8°C for one month or (in aliquots) at -20°C for longer. Avoid repeated freezing and thawing.
Stability:	Shelf life: one year from despatch.
Predicted Protein Size:	~ 38 kDa
Gene Name:	cAMP responsive element binding protein 1
Database Link:	Entrez Gene 12912 Mouse Entrez Gene 81646 Rat Entrez Gene 1385 Human P16220



[View online »](#)

Background:

Cyclic AMP Response Element Binding protein (CREB) is a basic / leucine zipper transcription factor that binds the cyclic AMP response element (CRE) and activates transcription in response to a variety of extracellular signals including neurotransmitters, hormones, membrane depolarization, and growth and neurotrophic factors. Activation of CREB is dependent upon the phosphorylation of serine 133. Phosphorylation occurs via p44 / 42 MAP kinase and p90RSK and also via p38 MAP kinase and MSK 1. Although CREB will bind DNA independent of its phosphorylation state, only the phosphorylated form is competent as a transcription factor. CREB binding protein (CBP), a transcriptional coactivator that directly interacts with CREB, binds to CREB in the region of serine 133. CREB appears to play an important role in learning and memory. CREB knock out mice show diminished learning ability.

Synonyms:

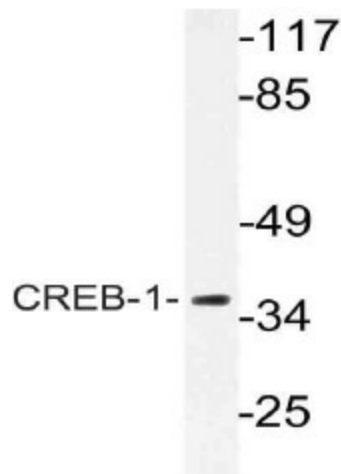
CREB-1

Protein Families:

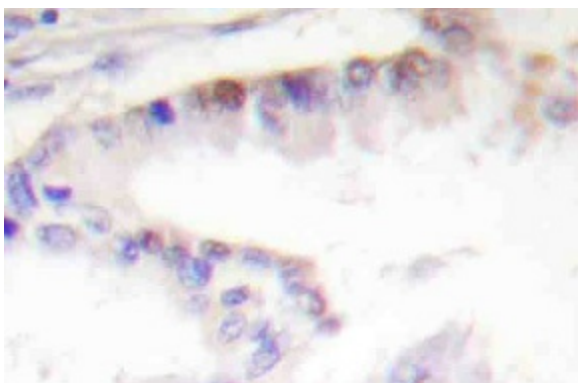
Druggable Genome, Transcription Factors

Protein Pathways:

Antigen processing and presentation, Huntington's disease, Melanogenesis, Prostate cancer

Product images:


Western blot (WB) analysis of CREB-1 antibody (Cat.-No.: AP210085PU-N) in extracts from HeLa cells.



Immunohistochemistry (IHC) analyzes of CREB-1 antibody (Cat.-No.: [AP21085PU-N]) in paraffin-embedded human lung carcinoma tissue.