

## Product datasheet for **AP21084PU-N**

### p27 KIP 1 (CDKN1B) Rabbit Polyclonal Antibody

#### Product data:

Product Type:	Primary Antibodies
Applications:	IHC, WB
Recommended Dilution:	<b>Western blot:</b> 1/500 - 1/1000. <b>Immunohistochemistry on paraffin sections</b> 1/50 - 1/200.
Reactivity:	Human, Mouse, Rat
Host:	Rabbit
Clonality:	Polyclonal
Specificity:	This antibody detects endogenous levels of p27 protein. (region surrounding Ala181)
Formulation:	Phosphate buffered saline (PBS), pH 7.2. State: Aff - Purified State: Liquid purified Ig fraction Preservative: 0.05% sodium azide
Concentration:	1.0 mg/ml
Purification:	Affinity chromatography (> 95% (by SDS-PAGE)
Conjugation:	Unconjugated
Storage:	Store undiluted at 2-8°C for one month or (in aliquots) at -20°C for longer. Avoid repeated freezing and thawing.
Stability:	Shelf life: one year from despatch.
Predicted Protein Size:	~ 27 kDa
Gene Name:	cyclin-dependent kinase inhibitor 1B
Database Link:	<a href="#">Entrez Gene 12576 Mouse</a> <a href="#">Entrez Gene 83571 Rat</a> <a href="#">Entrez Gene 1027 Human</a> <a href="#">P46527</a>



[View online »](#)

**Background:**

Cell cycle progression is regulated by cyclins and their cognate Cdks. p27 KIP 1 is a cell cycle regulatory mitotic inhibitor of cdk activity. p27 KIP 1 is a candidate tumor suppressor gene, and has been proposed to function as a possible mediator of TGF beta induced G1 arrest. p27 KIP 1 is up regulated in response to antimitogenic stimuli. The increased protein expression of p27 results in cellular arrest by binding to cyclin/Cdk complexes such as cyclin D1/Cdk4. p27 Kip1 is regulated by phosphorylation on serine 10 (S10) and threonine 187 (T187). Phosphorylation by CDK2 on T187 results in ubiquitylation and degradation of p27 Kip 1; while phosphorylation by hKIS on S10 signals the nuclear export to the cytoplasm.

**Synonyms:**

p27Kip1

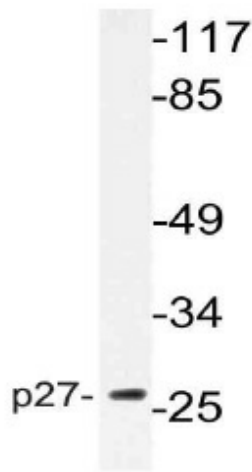
**Protein Families:**

Druggable Genome

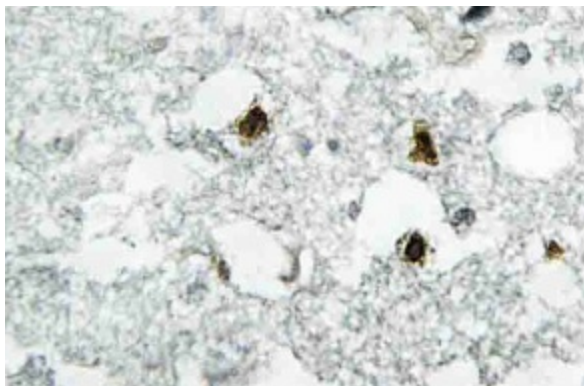
**Protein Pathways:**

Cell cycle, Chronic myeloid leukemia, ErbB signaling pathway, Pathways in cancer, Prostate cancer, Small cell lung cancer

**Product images:**



Western blot (WB) analysis of p27 antibody (Cat.-No.: AP21084PU-N) in extracts from NIH/3T3 cells.



Immunohistochemistry (IHC) analyzes of p27 antibody (Cat.-No.: AP21084PU-N) in paraffin-embedded human brain tissue.