

Product datasheet for **AP21080PU-N**

NXPH4 Rabbit Polyclonal Antibody

Product data:

Product Type:	Primary Antibodies
Applications:	IHC, WB
Recommended Dilution:	Western blot: 1/500 - 1/1000. Immunohistochemistry on paraffin sections 1/50 - 1/200.
Reactivity:	Human, Rat
Host:	Rabbit
Clonality:	Polyclonal
Specificity:	This antibody detects endogenous levels of Neurexophilin-4 protein. (region surrounding Pro248)
Formulation:	Phosphate buffered saline (PBS), pH 7.2. State: Aff - Purified State: Liquid purified Ig fraction Preservative: 0.05% sodium azide
Concentration:	1.0 mg/ml
Purification:	Affinity chromatography (> 95% (by SDS-PAGE)
Conjugation:	Unconjugated
Storage:	Store undiluted at 2-8°C for one month or (in aliquots) at -20°C for longer. Avoid repeated freezing and thawing.
Stability:	Shelf life: one year from despatch.
Predicted Protein Size:	~ 33 kDa
Gene Name:	neurexophilin 4
Database Link:	Entrez Gene 59316 Rat Entrez Gene 11247 Human O95158
Background:	May be signaling molecules that resemble neuropeptides and that act by binding to alpha-neurexins and possibly other receptors. Subcellular location: Secreted. Tissue specificity: Expressed in brain, spleen, and testis. Post-translational modification: May be proteolytically processed at the boundary between the N-terminal non-conserved and the central conserved domain in neuron-like cells. Sequence similarities: Belongs to the neurexophilin family.



[View online »](#)

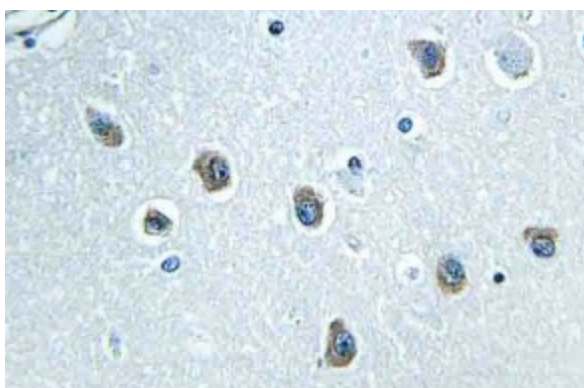
Synonyms: NXPH4, NPH4

Protein Families: Secreted Protein

Product images:



Western blot (WB) analysis of Neurexophilin-4 antibody (Cat.-No.: AP21080PU-N) in extracts from HUVEC cells.



Immunohistochemistry (IHC) analyzes of Neurexophilin-4 antibody (Cat.-No.: AP21080PU-N) in paraffin-embedded human brain tissue.