

## Product datasheet for **AP21080PU-M**

### **NXPH4 Rabbit Polyclonal Antibody**

#### **Product data:**

Product Type:	Primary Antibodies
Applications:	IHC, WB
Recommended Dilution:	<b>Western blot:</b> 1/500 - 1/1000. <b>Immunohistochemistry on paraffin sections</b> 1/50 - 1/200.
Reactivity:	Human, Rat
Host:	Rabbit
Clonality:	Polyclonal
Specificity:	This antibody detects endogenous levels of Neurexophilin-4 protein. (region surrounding Pro248)
Formulation:	Phosphate buffered saline (PBS), pH 7.2. State: Aff - Purified State: Liquid purified Ig fraction Preservative: 0.05% sodium azide
Concentration:	1.0 mg/ml
Purification:	Affinity chromatography (> 95% (by SDS-PAGE)
Conjugation:	Unconjugated
Storage:	Store undiluted at 2-8°C for one month or (in aliquots) at -20°C for longer. Avoid repeated freezing and thawing.
Stability:	Shelf life: one year from despatch.
Predicted Protein Size:	~ 33 kDa
Gene Name:	neurexophilin 4
Database Link:	<u><a href="#">Entrez Gene 59316 Rat</a></u> <u><a href="#">Entrez Gene 11247 Human</a></u> <u><a href="#">O95158</a></u>
Background:	May be signaling molecules that resemble neuropeptides and that act by binding to alpha-neurexins and possibly other receptors. Subcellular location: Secreted. Tissue specificity: Expressed in brain, spleen, and testis. Post-translational modification: May be proteolytically processed at the boundary between the N-terminal non-conserved and the central conserved domain in neuron-like cells. Sequence similarities: Belongs to the neurexophilin family.



[View online »](#)

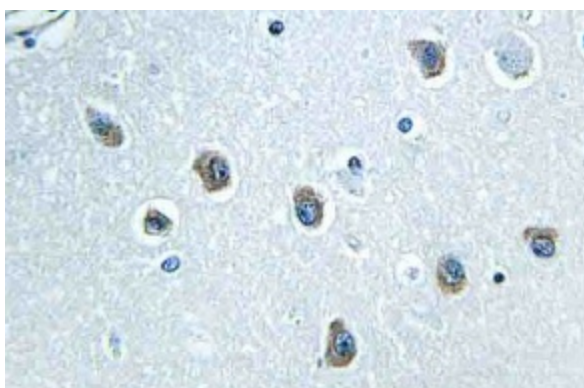
**Synonyms:** NXPH4, NPH4

**Protein Families:** Secreted Protein

**Product images:**



Western blot (WB) analysis of Neurexophilin-4 antibody (Cat.-No.: [AP21080PU-N]) in extracts from HUVEC cells.



Immunohistochemistry (IHC) analyzes of Neurexophilin-4 antibody (Cat.-No.: [AP21080PU-N]) in paraffin-embedded human brain tissue.