

## Product datasheet for **AP21077PU-S**

### ME3 Rabbit Polyclonal Antibody

#### Product data:

Product Type:	Primary Antibodies
Applications:	IHC, WB
Recommended Dilution:	<b>Western blot:</b> 1/500 - 1/1000. <b>Immunohistochemistry on paraffin sections</b> 1/50 - 1/200.
Reactivity:	Human, Mouse
Host:	Rabbit
Clonality:	Polyclonal
Specificity:	This antibody detects endogenous levels of ME3 protein. (region surrounding Arg576)
Formulation:	Phosphate buffered saline (PBS), pH 7.2. State: Aff - Purified State: Liquid purified Ig fraction Preservative: 0.05% sodium azide
Concentration:	1.0 mg/ml
Purification:	Affinity chromatography (> 95% (by SDS-PAGE)
Conjugation:	Unconjugated
Storage:	Store undiluted at 2-8°C for one month or (in aliquots) at -20°C for longer. Avoid repeated freezing and thawing.
Stability:	Shelf life: one year from despatch.
Predicted Protein Size:	~ 67 kDa
Gene Name:	malic enzyme 3
Database Link:	<a href="#">Entrez Gene 109264 Mouse</a> <a href="#">Entrez Gene 10873 Human</a> <a href="#">Q16798</a>
Background:	Proteins of the matrix metalloproteinase (MMP) family are involved in the breakdown of extracellular matrix in normal physiological processes, such as embryonic development, reproduction, and tissue remodeling, as well as in disease processes, such as arthritis, metastasis, and atherosclerosis. Most MMP's are secreted as inactive proproteins which are activated when cleaved by extracellular proteinases.

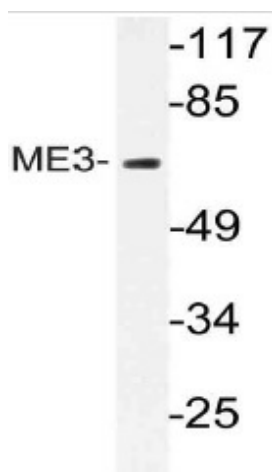


[View online »](#)

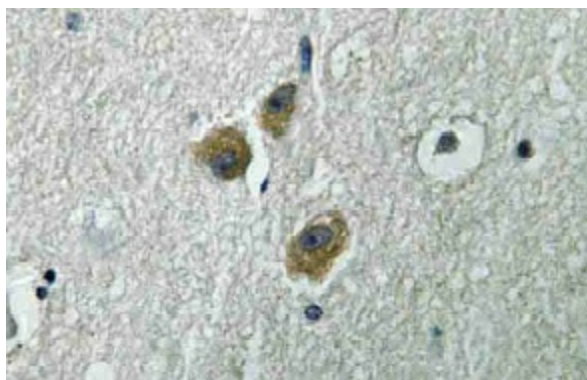
Synonyms: NADP-ME

Protein Pathways: Metabolic pathways, Pyruvate metabolism

### Product images:



Western blot (WB) analysis of ME3 antibody (Cat.-No.: [AP21077PU-N]) in extracts from RAW264 cells.



Immunohistochemistry (IHC) analyzes of ME3 antibody (Cat.-No.: [AP21077PU-N]) in paraffin-embedded human brain tissue.