

Product datasheet for **AP21076PU-M**

NDUFA8 Rabbit Polyclonal Antibody

Product data:

Product Type:	Primary Antibodies
Applications:	IHC, WB
Recommended Dilution:	Western blot: 1/500 - 1/1000. Immunohistochemistry on paraffin sections 1/50 - 1/200.
Reactivity:	Human, Mouse
Host:	Rabbit
Clonality:	Polyclonal
Specificity:	This antibody detects endogenous levels of NDUFA8 protein. (region surroundnig Pro141)
Formulation:	Phosphate buffered saline (PBS), pH 7.2. State: Aff - Purified State: Liquid purified Ig fraction Preservative: 0.05% sodium azide
Concentration:	1.0 mg/ml
Purification:	Affinity chromatography (> 95% (by SDS-PAGE)
Conjugation:	Unconjugated
Storage:	Store undiluted at 2-8°C for one month or (in aliquots) at -20°C for longer. Avoid repeated freezing and thawing.
Stability:	Shelf life: one year from despatch.
Predicted Protein Size:	~ 22 kDa
Gene Name:	NADH:ubiquinone oxidoreductase subunit A8
Database Link:	<u>Entrez Gene 68375 Mouse</u> <u>Entrez Gene 4702 Human</u> <u>P51970</u>
Background:	NDUFA8 is an accessory subunit of the mitochondrial membrane respiratory chain NADH dehydrogenase (Complex I), that is believed to be not involved in catalysis. Mammalian complex I is composed of 45 different subunits and transfers electrons from NADH to the respiratory chain. The immediate electron acceptor for the enzyme is believed to be ubiquinone.

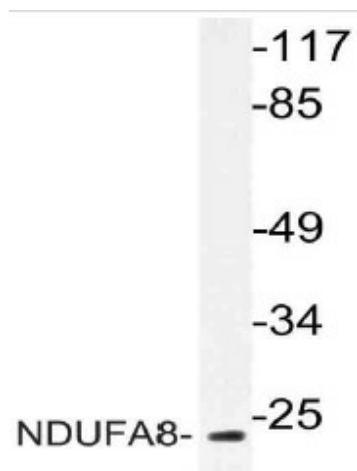


[View online »](#)

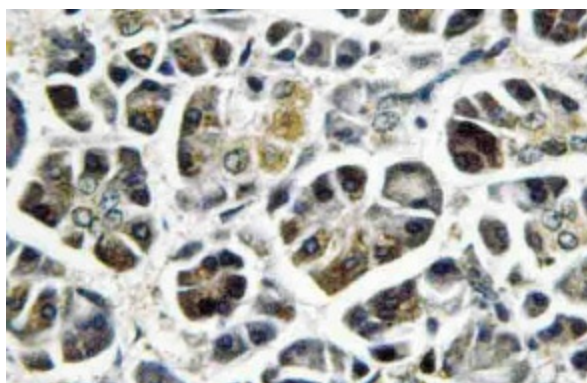
Synonyms: CI-19KD; CI-PGIV; MGC793; PGIV

Protein Pathways: Alzheimer's disease, Huntington's disease, Metabolic pathways, Oxidative phosphorylation, Parkinson's disease

Product images:



Western blot (WB) analysis of NDUFA8 antibody (Cat.-No.: [AP21076PU-N]) in extracts from 293 cells.



Immunohistochemistry (IHC) analyzes of NDUFA8 antibody (Cat.-No.: [AP21076PU-N]) in paraffin-embedded human pancreas tissue.