

## Product datasheet for **AP21071PU-N**

### LRP3 Rabbit Polyclonal Antibody

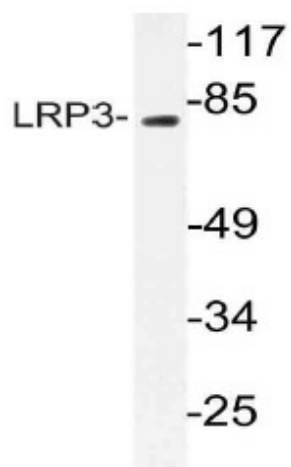
#### Product data:

Product Type:	Primary Antibodies
Applications:	WB
Recommended Dilution:	<b>Western blot:</b> 1/500 - 1/1000.
Reactivity:	Human, Mouse, Rat
Host:	Rabbit
Clonality:	Polyclonal
Specificity:	This antibody detects endogenous levels of LRP3 protein. (region surrounding Tyr58)
Formulation:	Phosphate buffered saline (PBS), pH 7.2. State: Aff - Purified State: Liquid purified Ig fraction Preservative: 0.05% sodium azide
Concentration:	1.0 mg/ml
Purification:	Affinity chromatography (> 95% (by SDS-PAGE)
Conjugation:	Unconjugated
Storage:	Store undiluted at 2-8°C for one month or (in aliquots) at -20°C for longer. Avoid repeated freezing and thawing.
Stability:	Shelf life: one year from despatch.
Predicted Protein Size:	~ 80 kDa
Gene Name:	LDL receptor related protein 3
Database Link:	<a href="#">Entrez Gene 89787 Rat</a> <a href="#">Entrez Gene 435965 Mouse</a> <a href="#">Entrez Gene 4037 Human O75074</a>
Background:	LRP3 is a probable receptor, widely expressed, which may be involved in the internalization of lipophilic molecules and/or signal transduction. Its precise role is, however unclear, since it does not bind to very low density lipoprotein (VLDL) or to LRPAP1 in vitro.
Synonyms:	hLRp105, LRP-3
Protein Families:	Druggable Genome, Transmembrane



[View online »](#)

## Product images:



Western blot (WB) analysis of LRP3 antibody (Cat. No.: AP21071PU-N) in extracts from RAW264.7 cells.