

Product datasheet for **AP21070PU-S**

IQ motif containing B1 (IQCB1) Rabbit Polyclonal Antibody

Product data:

Product Type:	Primary Antibodies
Applications:	IHC, WB
Recommended Dilution:	Western blot: 1/500 - 1/1000. Immunohistochemistry on paraffin sections 1/50 - 1/200.
Reactivity:	Human, Mouse
Host:	Rabbit
Clonality:	Polyclonal
Specificity:	This antibody detects endogenous levels of Nephrocystin-5 protein. (region surrounding Arg467)
Formulation:	Phosphate buffered saline (PBS), pH 7.2. State: Aff - Purified State: Liquid purified Ig fraction Preservative: 0.05% sodium azide
Concentration:	1.0 mg/ml
Purification:	Affinity chromatography (> 95% (by SDS-PAGE)
Conjugation:	Unconjugated
Storage:	Store undiluted at 2-8°C for one month or (in aliquots) at -20°C for longer. Avoid repeated freezing and thawing.
Stability:	Shelf life: one year from despatch.
Predicted Protein Size:	~ 69 kDa
Gene Name:	IQ motif containing B1
Database Link:	<u>Entrez Gene 320299 Mouse</u> <u>Entrez Gene 9657 Human</u> <u>Q15051</u>



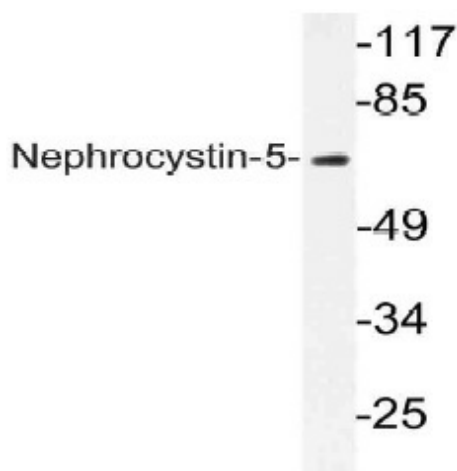
[View online »](#)

Background:

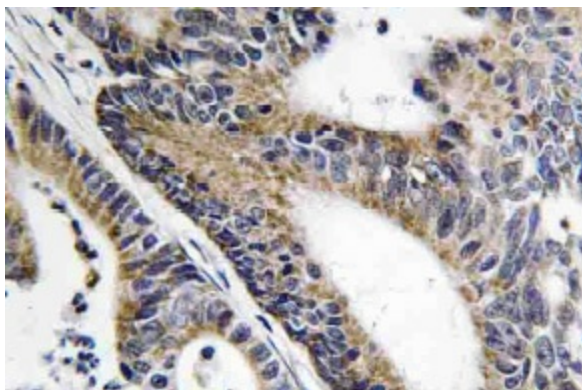
CEP290 activates ATF4 mediated transcription and is required for the correct localization of ciliary and phototransduction proteins in retinal photoreceptor cells; may play a role in ciliary transport processes. CEP290 is ubiquitously expressed; strongly in placenta and weakly in brain. There are two named isoforms. Defects in CEP290 are a cause of Joubert syndrome type 5 (JBT5) [MIM:610188], Senior-Loken syndrome type 6 (SLSN6) [MIM:610189], Leber congenital amaurosis type 10 (LCA10) [MIM:611755] and Meckel syndrome type 4 (MKS4) [MIM:611134]. Antibodies against CEP290 are present in sera from patients with cutaneous T cell lymphomas, but not in the healthy control population.

Synonyms:

KIAA0036, NPHP5, OK/SW-cl.85

Product images:


Western blot (WB) analysis of Nephrocystin-5 antibody (Cat.-No.: [AP21070PU-N]) in extracts from K562 cells.



Immunohistochemistry (IHC) analyzes of Nephrocystin-5 antibody (Cat.-No.: [AP21070PU-N]) in paraffin-embedded human colon carcinoma tissue.