

Product datasheet for **AP21067PU-M**

NDUFV2 Rabbit Polyclonal Antibody

Product data:

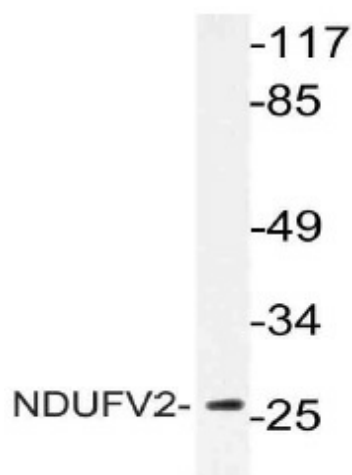
Product Type:	Primary Antibodies
Applications:	IHC, WB
Recommended Dilution:	Western blot: 1/500-1/1000. Immunohistochemistry on Paraffin Sections: 1/50-1/200.
Reactivity:	Human, Mouse, Rat
Host:	Rabbit
Clonality:	Polyclonal
Specificity:	This antibody detects endogenous levels of NDUFV2 protein. (region surrounding Pro52)
Formulation:	Phosphate buffered saline (PBS), pH~7.2 State: Aff - Purified State: Liquid purified Ig fraction (> 95% pure by SDS-PAGE). Preservative: 0.05% Sodium Azide
Concentration:	1.0 mg/ml
Purification:	Affinity Chromatography using epitope-specific immunogen.
Conjugation:	Unconjugated
Storage:	Store undiluted at 2-8°C for one month or (in aliquots) at -20°C for longer. Avoid repeated freezing and thawing.
Stability:	Shelf life: one year from despatch.
Predicted Protein Size:	~ 27 kDa
Gene Name:	NADH:ubiquinone oxidoreductase core subunit V2
Database Link:	<u>Entrez Gene 72900 Mouse</u> <u>Entrez Gene 81728 Rat</u> <u>Entrez Gene 4729 Human</u> <u>P19404</u>



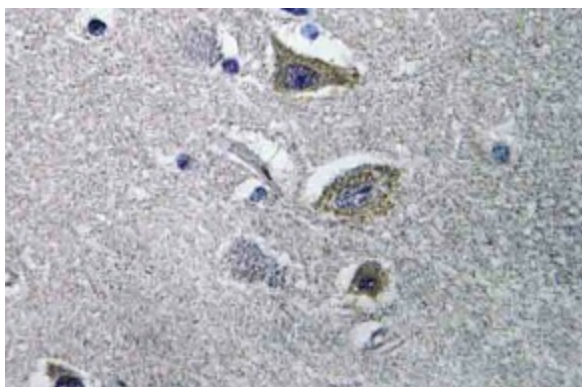
[View online »](#)

Background:	NDUFV2 is the core subunit of the mitochondrial membrane respiratory chain NADH dehydrogenase (Complex I) that is believed to belong to the minimal assembly required for catalysis. Complex I functions in the transfer of electrons from NADH to the respiratory chain. The immediate electron acceptor for the enzyme is believed to be ubiquinone. Complex I is composed of 45 different subunits. This is a component of the flavoprotein-sulfur (FP) fragment of the enzyme.
Synonyms:	NDUFV2
Protein Families:	Druggable Genome
Protein Pathways:	Alzheimer's disease, Huntington's disease, Metabolic pathways, Oxidative phosphorylation, Parkinson's disease

Product images:



Western blot (WB) analysis of NDUFV2 antibody (Cat.-No.: [AP21067PU-N]) in extracts from Jurkat cells.



Immunohistochemistry (IHC) analyzes of NDUFV2 antibody (Cat.-No.: [AP21067PU-N]) in paraffin-embedded human brain tissue.