

Product datasheet for **AP21065PU-M**

LILRA1 Rabbit Polyclonal Antibody

Product data:

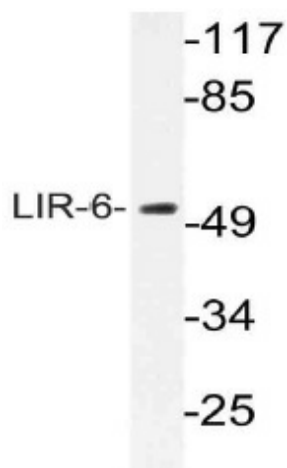
Product Type:	Primary Antibodies
Applications:	IF, WB
Recommended Dilution:	Western blot: 1/500 - 1/1000. Immunofluorescence: 1/50 - 1/200.
Reactivity:	Human
Host:	Rabbit
Clonality:	Polyclonal
Specificity:	This antibody detects endogenous levels of LIR-6 protein. (region surrounding Phe83)
Formulation:	Phosphate buffered saline (PBS), pH 7.2. State: Aff - Purified State: Liquid purified Ig fraction Preservative: 0.05% sodium azide
Concentration:	1.0 mg/ml
Purification:	Affinity chromatography (> 95% (by SDS-PAGE)
Conjugation:	Unconjugated
Storage:	Store undiluted at 2-8°C for one month or (in aliquots) at -20°C for longer. Avoid repeated freezing and thawing.
Stability:	Shelf life: one year from despatch.
Predicted Protein Size:	~ 53 kDa
Gene Name:	leukocyte immunoglobulin like receptor A1
Database Link:	Entrez Gene 11024 Human O75019
Background:	LILRA3 is a member of leukocyte immunoglobulin-like receptor gene family. Leukocyte Ig-like receptors (LIRs) are a family of inhibitory and stimulatory immunoreceptors expressed predominantly on monocytes and B cells and at lower levels on dendritic cells and natural killer (NK) cells. LILRA3 lacks a transmembrane region and may act as a soluble receptor for class I MHC antigens. It is expressed in B-cells, and at lower levels in natural killer (NK) cells.



[View online »](#)

Synonyms: LIR6

Product images:



Western blot (WB) analysis of LIR-6 antibody (Cat.-No.: [AP21065PU-N]) in extracts from MCF-7 cells.