

Product datasheet for **AP21064PU-M**

HLA-DOA Rabbit Polyclonal Antibody

Product data:

Product Type:	Primary Antibodies
Applications:	IHC, WB
Recommended Dilution:	Western blot: 1/500 - 1/1000. Immunohistochemistry on paraffin sections 1/50 - 1/200.
Reactivity:	Human
Host:	Rabbit
Clonality:	Polyclonal
Specificity:	This antibody detects endogenous levels of HLADOalpha protein. (region surrounding Val111)
Formulation:	Phosphate buffered saline (PBS), pH 7.2. State: Aff - Purified State: Liquid purified Ig fraction Preservative: 0.05% sodium azide
Concentration:	1.0 mg/ml
Purification:	Affinity chromatography (> 95% (by SDS-PAGE)
Conjugation:	Unconjugated
Storage:	Store undiluted at 2-8°C for one month or (in aliquots) at -20°C for longer. Avoid repeated freezing and thawing.
Stability:	Shelf life: one year from despatch.
Predicted Protein Size:	~ 34 kDa
Gene Name:	major histocompatibility complex, class II, DO alpha
Database Link:	Entrez Gene 3111 Human P06340



[View online »](#)

Background:

Reacts with HLA-DO, a heterodimer formed by DNalpha and DObeta subunits in B cells. DNalpha and DObeta are the products of the non-classical class II genes, HLA-DNA and HLA-DOB, respectively. DO forms tight complexes with DM in the endoplasmic reticulum and is thereby sorted to lysosomal vesicles during antigen processing and presentation. It is tightly associated with DM and it is selectively expressed on antigenpresenting cells, such as B cells, dendritic cells and thymic epithelial cells. DO can enhance the efficiency of peptide loading and has been found to stabilize DM at low pH, preserving its chaperon activity. DO-DM complexes are more efficient than DM in protecting empty DR molecules. Reports describe DO as a co-chaperone of DM. This antibody has also been reported to be suitable for western blot and immunoprecipitation.

Synonyms:

MHC class II antigen DOA, MHC DZ alpha, MHC DN-alpha, HLA-DNA, HLA-DZA

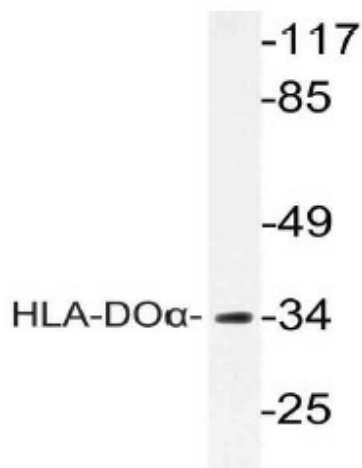
Protein Families:

Transmembrane

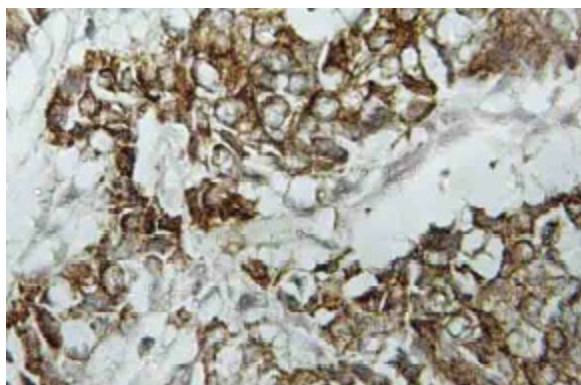
Protein Pathways:

Allograft rejection, Antigen processing and presentation, Asthma, Autoimmune thyroid disease, Cell adhesion molecules (CAMs), Graft-versus-host disease, Systemic lupus erythematosus, Type I diabetes mellitus, Viral myocarditis

Product images:



Western blot (WB) analysis of HLA-DOalpha antibody (Cat.-No.: [AP21064PU-N]) in extracts from COLO cells.



Immunohistochemistry (IHC) analyzes of HLA-DOalpha antibody (Cat.-No.: [AP21064PU-N]) in paraffin-embedded human breast carcinoma tissue.