

## Product datasheet for **AP21061PU-N**

### **POLR2E Rabbit Polyclonal Antibody**

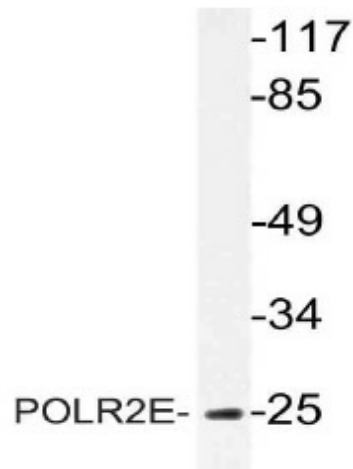
#### **Product data:**

|                                |   |
|--------------------------------|---|
| <b>Product Type:</b>           | Primary Antibodies  |
| <b>Applications:</b>           | IHC, WB   |
| <b>Recommended Dilution:</b>   | Western Blot: 1/500 - 1/1000.<br>Immunohistochemistry: 1/50 - 1/200.  |
| <b>Reactivity:</b>             | Human, Mouse, Rat   |
| <b>Host:</b>                   | Rabbit  |
| <b>Clonality:</b>              | Polyclonal  |
| <b>Specificity:</b>            | This antibody detects endogenous levels of POLR2E protein.<br>(region surrounding Leu58)  |
| <b>Formulation:</b>            | Phosphate buffered saline (PBS), pH 7.2.<br>State: Aff - Purified<br>State: Liquid purified Ig fraction<br>Preservative: 0.05% sodium azide |
| <b>Concentration:</b>          | 1.0 mg/ml   |
| <b>Purification:</b>           | Affinity chromatography (> 95% (by SDS-PAGE)  |
| <b>Conjugation:</b>            | Unconjugated  |
| <b>Storage:</b>                | Store undiluted at 2-8°C for one month or (in aliquots) at -20°C for longer.<br>Avoid repeated freezing and thawing.                        |
| <b>Stability:</b>              | Shelf life: one year from despatch.   |
| <b>Predicted Protein Size:</b> | ~ 25 kDa  |
| <b>Gene Name:</b>              | Homo sapiens RNA polymerase II subunit E (POLR2E), transcript variant 1   |
| <b>Database Link:</b>          | <a href="#">Entrez Gene 66420 Mouse</a> <a href="#">Entrez Gene 690966 Rat</a> <a href="#">Entrez Gene 5434 Human P19388</a>                |

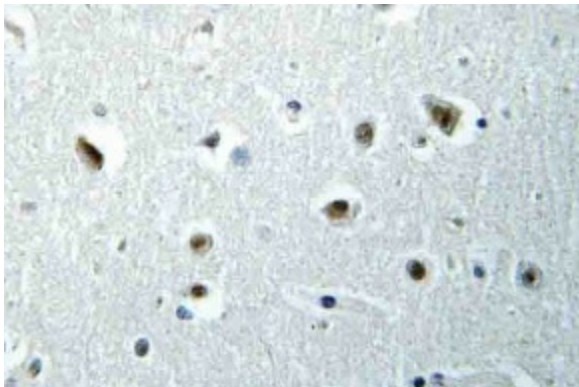


[View online »](#)

|                          |   |
|--------------------------|---|
| <b>Background:</b>       | This gene encodes the fifth largest subunit of RNA polymerase II, the polymerase responsible for synthesizing messenger RNA in eukaryotes. This subunit is shared by the other two DNA-directed RNA polymerases and is present in twofold molar excess over the other polymerase subunits. An interaction between this subunit and a hepatitis virus transactivating protein has been demonstrated, suggesting that interaction between transcriptional activators and the polymerase can occur through this subunit. A pseudogene is located on chromosome 11. |
| <b>Synonyms:</b>         | RNA polymerases I, II, and III subunit ABC1, RPABC1, XAP4   |
| <b>Protein Families:</b> | Transcription Factors   |
| <b>Protein Pathways:</b> | Huntington's disease, Metabolic pathways, Purine metabolism, Pyrimidine metabolism, RNA polymerase  |

**Product images:**

Western blot (WB) analysis of POLR2E antibody (Cat.-No.: AP21061PU-N) in extracts from MCF-7 cells.



Immunohistochemistry (IHC) analyzes of POLR2E antibody (Cat.-No.: AP21061PU-N) in paraffin-embedded human brain tissue.