

Product datasheet for **AP21061PU-M**

POLR2E Rabbit Polyclonal Antibody

Product data:

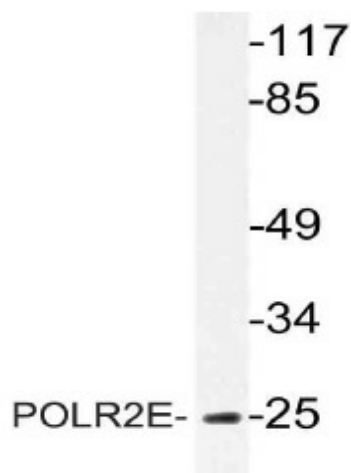
Product Type:	Primary Antibodies
Applications:	IHC, WB
Recommended Dilution:	Western Blot: 1/500 - 1/1000. Immunohistochemistry: 1/50 - 1/200.
Reactivity:	Human, Mouse, Rat
Host:	Rabbit
Clonality:	Polyclonal
Specificity:	This antibody detects endogenous levels of POLR2E protein. (region surrounding Leu58)
Formulation:	Phosphate buffered saline (PBS), pH 7.2. State: Aff - Purified State: Liquid purified Ig fraction Preservative: 0.05% sodium azide
Concentration:	1.0 mg/ml
Purification:	Affinity chromatography (> 95% (by SDS-PAGE)
Conjugation:	Unconjugated
Storage:	Store undiluted at 2-8°C for one month or (in aliquots) at -20°C for longer. Avoid repeated freezing and thawing.
Stability:	Shelf life: one year from despatch.
Predicted Protein Size:	~ 25 kDa
Gene Name:	polymerase (RNA) II subunit E
Database Link:	Entrez Gene 66420 Mouse Entrez Gene 690966 Rat Entrez Gene 5434 Human P19388



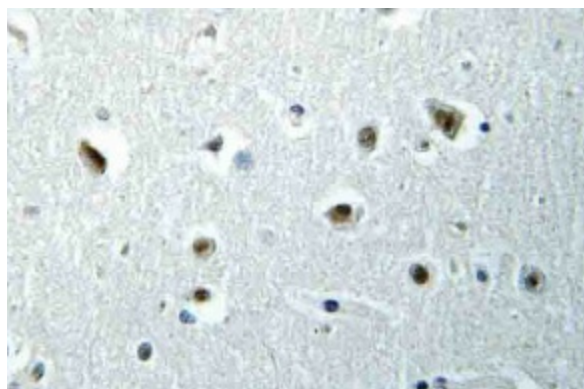
[View online »](#)

Background:	This gene encodes the fifth largest subunit of RNA polymerase II, the polymerase responsible for synthesizing messenger RNA in eukaryotes. This subunit is shared by the other two DNA-directed RNA polymerases and is present in twofold molar excess over the other polymerase subunits. An interaction between this subunit and a hepatitis virus transactivating protein has been demonstrated, suggesting that interaction between transcriptional activators and the polymerase can occur through this subunit. A pseudogene is located on chromosome 11.
Synonyms:	RNA polymerases I, II, and III subunit ABC1, RPABC1, XAP4
Protein Families:	Transcription Factors
Protein Pathways:	Huntington's disease, Metabolic pathways, Purine metabolism, Pyrimidine metabolism, RNA polymerase

Product images:



Western blot (WB) analysis of POLR2E antibody (Cat.-No.: [AP21061PU-N]) in extracts from MCF-7 cells.



Immunohistochemistry (IHC) analysis of POLR2E antibody (Cat.-No.: [AP21061PU-N]) in paraffin-embedded human brain tissue.