

## Product datasheet for **AP21059PU-N**

### Amyloid Precursor Protein (APP) Rabbit Polyclonal Antibody

#### Product data:

Product Type:	Primary Antibodies
Applications:	IHC, WB
Recommended Dilution:	<b>Western blot:</b> 1/500 - 1/1000. <b>Immunohistochemistry on paraffin sections</b> 1/50 - 1/200.
Reactivity:	Human
Host:	Rabbit
Clonality:	Polyclonal
Specificity:	This antibody detects endogenous levels of Cerebral 1 protein. (region surrounding Leu310)
Formulation:	Phosphate buffered saline (PBS), pH 7.2. State: Aff - Purified State: Liquid purified Ig fraction Preservative: 0.05% sodium azide
Concentration:	1.0 mg/ml
Purification:	Affinity chromatography (> 95% (by SDS-PAGE)
Conjugation:	Unconjugated
Storage:	Store undiluted at 2-8°C for one month or (in aliquots) at -20°C for longer. Avoid repeated freezing and thawing.
Stability:	Shelf life: one year from despatch.
Predicted Protein Size:	~ 51 kDa
Gene Name:	amyloid beta precursor protein
Database Link:	<a href="#">Entrez Gene 351 Human P05067</a>



[View online »](#)

**Background:**

Cerebral 1 also called hucep-1, KIAA0409 or RRP8, is an essential component of the eNoSC (energy-dependent nucleolar silencing) complex, a complex that mediates silencing of rDNA in response to intracellular energy status and acts by recruiting histone-modifying enzymes. The eNoSC complex is able to sense the energy status of cell: upon glucose starvation, elevation of NAD<sup>+</sup>/NADP<sup>+</sup> ratio activates SIRT1, leading to histone H3 deacetylation followed by dimethylation of H3 at 'Lys-9' (H3K9me2) by SUV39H1 and the formation of silent chromatin in the rDNA locus. In the complex, RRP8 binds to H3K9me2 and probably acts as a methyltransferase. Its substrates are however unknown.

**Synonyms:**

Alzheimer disease amyloid protein, Amyloid Precursor Protein, ABPP, APPI, PreA4, Cerebral vascular amyloid peptide, CVAP

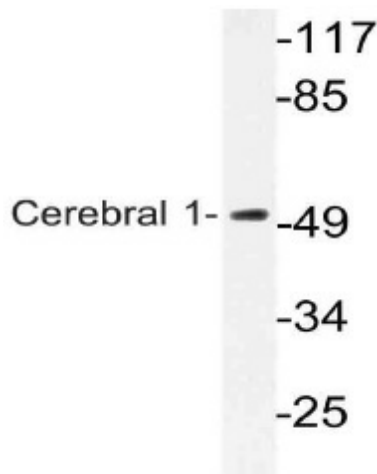
**Protein Families:**

Druggable Genome, Transmembrane

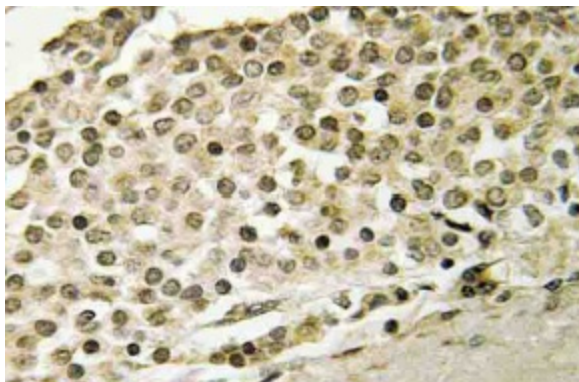
**Protein Pathways:**

Alzheimer's disease

**Product images:**



Western blot (WB) analysis of Cerebral 1 antibody (Cat.-No.: AP21059PU-N) in extracts from MCF-7 cells.



Immunohistochemistry (IHC) analyzes of Cerebral 1 antibody (Cat.-No.: AP21059PU-N) in paraffin-embedded human breast carcinoma tissue.