

Product datasheet for **AP21057PU-M**

Nucleophosmin (NPM1) Rabbit Polyclonal Antibody

Product data:

Product Type:	Primary Antibodies
Applications:	IF, IHC, WB
Recommended Dilution:	Western blot: 1/500 - 1/1000. Immunohistochemistry on paraffin sections 1/50 - 1/200. Immunofluorescence: 1/50 - 1/200.
Reactivity:	Human, Mouse, Rat
Host:	Rabbit
Clonality:	Polyclonal
Specificity:	This antibody detects endogenous levels of NPM protein. (region surrounding Lys230)
Formulation:	Phosphate buffered saline (PBS), pH 7.2. State: Aff - Purified State: Liquid purified Ig fraction Preservative: 0.05% sodium azide
Concentration:	1.0 mg/ml
Purification:	Affinity chromatography (> 95% (by SDS-PAGE)
Conjugation:	Unconjugated
Storage:	Store undiluted at 2-8°C for one month or (in aliquots) at -20°C for longer. Avoid repeated freezing and thawing.
Stability:	Shelf life: one year from despatch.
Predicted Protein Size:	~ 33 kDa
Gene Name:	nucleophosmin (nucleolar phosphoprotein B23, numatrin)
Database Link:	Entrez Gene 18148 Mouse Entrez Gene 25498 Rat Entrez Gene 4869 Human P06748



[View online »](#)

Background:

This gene encodes a phosphoprotein which moves between the nucleus and the cytoplasm. The gene product is thought to be involved in several processes including regulation of the ARF/p53 pathway. A number of genes are fusion partners have been characterized, in particular the anaplastic lymphoma kinase gene on chromosome 2. Mutations in this gene are associated with acute myeloid leukemia. More than a dozen pseudogenes of this gene have been identified. Alternative splicing results in multiple transcript variants.

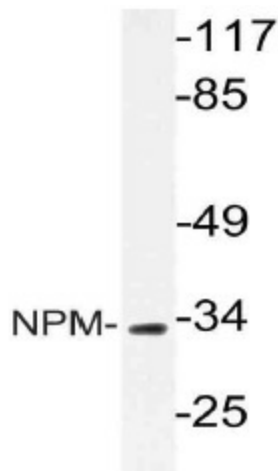
Synonyms:

NPM, NPM1, Numatrin

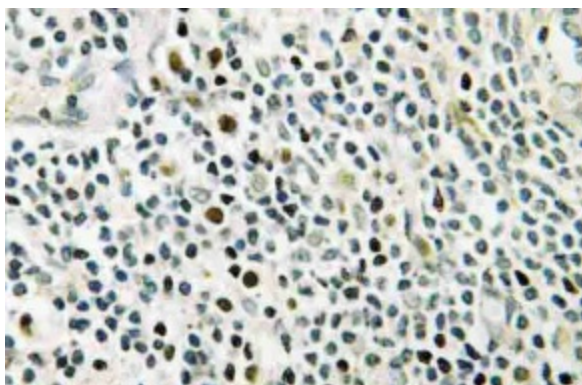
Protein Families:

Druggable Genome, Stem cell - Pluripotency, Transcription Factors

Product images:



Western blot (WB) analysis of NPM antibody (Cat.-No.: [AP21057PU-N]) in extracts from HeLa cells.



Immunohistochemistry (IHC) analyzes of NPM antibody (Cat.-No.: [AP21057PU-N]) in paraffin-embedded human tonsil tissue.