

## Product datasheet for **AP21055PU-N**

### IL13 receptor alpha 1 (IL13RA1) Rabbit Polyclonal Antibody

#### Product data:

Product Type:	Primary Antibodies
Applications:	IF, IHC, WB
Recommended Dilution:	<b>Western blot:</b> 1/500-1/1000. <b>Immunofluorescence:</b> 1/50-1/200. <b>Immunohistochemistry on Paraffin Sections:</b> 1/50-1/200.
Reactivity:	Human, Mouse, Rat
Host:	Rabbit
Clonality:	Polyclonal
Specificity:	This antibody detects endogenous levels of IL-13R-alpha-1 protein. (region surrounding Lys401)
Formulation:	Phosphate buffered saline (PBS), pH~7.2 State: Aff - Purified State: Liquid purified Ig fraction (> 95% (by SDS-PAGE) Preservative: 0.05% Sodium Azide
Concentration:	1.0 mg/ml
Purification:	Affinity Chromatography using epitope-specific immunogen
Conjugation:	Unconjugated
Storage:	Store undiluted at 2-8°C for one month or (in aliquots) at -20°C for longer. Avoid repeated freezing and thawing.
Stability:	Shelf life: one year from despatch.
Predicted Protein Size:	~49 kDa
Gene Name:	interleukin 13 receptor subunit alpha 1
Database Link:	<a href="#">Entrez Gene 16164 Mouse</a> <a href="#">Entrez Gene 252963 Rat</a> <a href="#">Entrez Gene 3597 Human P78552</a>



[View online »](#)

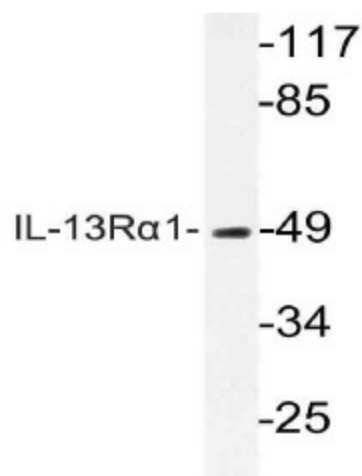
**Background:** The protein encoded by this gene is a subunit of the interleukin 13 receptor. This subunit forms a receptor complex with IL4 receptor alpha, a subunit shared by IL13 and IL4 receptors. This subunit serves as a primary IL13-binding subunit of the IL13 receptor, and may also be a component of IL4 receptors. This protein has been shown to bind tyrosine kinase TYK2, and thus may mediate the signaling processes that lead to the activation of JAK1, STAT3 and STAT6 induced by IL13 and IL4.

**Synonyms:** Interleukin-13 receptor alpha-1 chain, IL-13R-alpha-1, IL-13RA-1, IL13R, IL13RA, IL13 receptor alpha, CT19

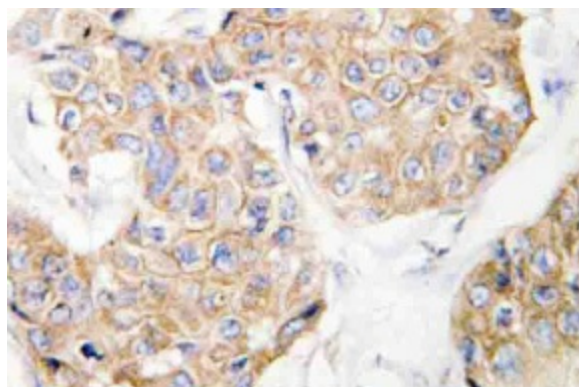
**Protein Families:** Druggable Genome, Transmembrane

**Protein Pathways:** Cytokine-cytokine receptor interaction, Jak-STAT signaling pathway

**Product images:**



Western blot analysis of CD213a1 / IL13RA1 Antibody (Cat.-No.: AP21055PU-N) in extracts from COLOcells.



Immunohistochemistry analysis of CD213a1 / IL13RA1 Antibody (Cat.-No.: AP21055PU-N) in paraffin-embedded human breast carcinoma tissue.