

## Product datasheet for **AP21038PU-N**

### Her2 (ERBB2) Rabbit Polyclonal Antibody

#### Product data:

Product Type:	Primary Antibodies
Applications:	IHC
Recommended Dilution:	Western Blot: 1/500 - 1/1000. Immunohistochemistry: 1/50 - 1/200. Immunofluorescence: 1/50 - 1/200.
Reactivity:	Human, Mouse, Rat
Host:	Rabbit
Clonality:	Polyclonal
Specificity:	HER2 pAb detects endogenous levels of HER2 protein.
Formulation:	Phosphate buffered saline (PBS) with 15 mM sodium azide, approx. pH 7.2. State: Aff - Purified State: Liquid purified Ig fraction
Concentration:	1,0 mg/ml
Purification:	Affinity chromatography (> 95% (by SDS-PAGE)
Conjugation:	Unconjugated
Storage:	Store the antibody undiluted at 2-8°C for one month or (in aliquots) at -20°C for longer. Avoid repeated freezing and thawing.
Stability:	Shelf life: one year from despatch.
Gene Name:	erb-b2 receptor tyrosine kinase 2
Database Link:	<a href="#">Entrez Gene 13866 Mouse</a> <a href="#">Entrez Gene 24337 Rat</a> <a href="#">Entrez Gene 2064 Human P04626</a>



[View online »](#)

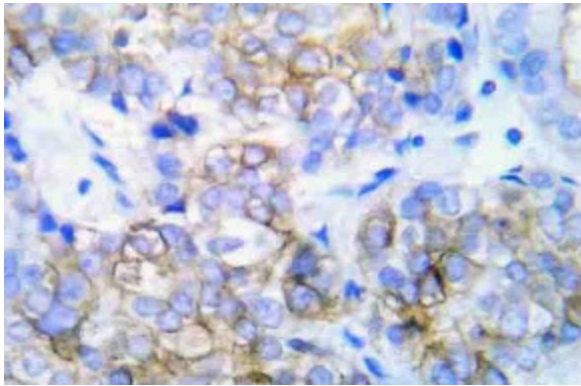
**Background:** The EGF receptor family comprises several related receptor tyrosine kinases that are frequently overexpressed in a variety of carcinomas. Members of this receptor family include EGFR (HER1), Neu (ErbB-2, HER2), ErbB-3 (HER3) and ErbB-4 (HER4), which form either homodimers or heterodimers upon ligand binding. Full length ErbB-3 is overexpressed in human mammary tumors. The ErbB-3 gene also produces several alternative variants, including a secreted form which negatively regulates heregulin stimulated ErbB activation. ErbB-3 heterodimerizes with Neu and binds heregulin in order to activate phosphoinositide (PI) 3-kinase. The recruitment and activation of PI 3-kinase occurs via its interaction with phosphorylated YXXM motifs in the carboxyterminus of ErbB-3.

**Synonyms:** HER-2, NEU, p185erbB2, NGL, c-erbB-2, MNL19

**Protein Families:** Druggable Genome, Protein Kinase, Transmembrane

**Protein Pathways:** Adherens junction, Bladder cancer, Calcium signaling pathway, Endometrial cancer, ErbB signaling pathway, Focal adhesion, Non-small cell lung cancer, Pancreatic cancer, Pathways in cancer, Prostate cancer

### Product images:



Immunohistochemistry (IHC) analyzes of HER2 pAb in paraffin-embedded human lung adenocarcinoma tissue.