

Product datasheet for **AP21036PU-M**

HDAC1 Rabbit Polyclonal Antibody

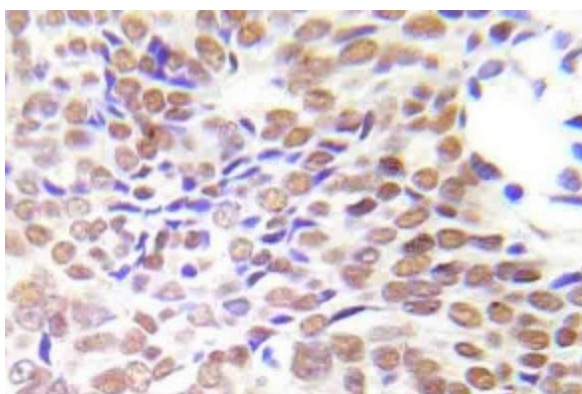
Product data:

Product Type:	Primary Antibodies
Applications:	IHC
Recommended Dilution:	Immunohistochemistry on paraffin sections 1/50 - 1/200.
Reactivity:	Human, Mouse, Rat
Host:	Rabbit
Clonality:	Polyclonal
Specificity:	This antibody detects endogenous levels of HDAC1 protein. (region surrounding Glu427)
Formulation:	Phosphate buffered saline (PBS), pH 7.2. State: Aff - Purified State: Liquid purified Ig fraction Preservative: 0.05% sodium azide
Concentration:	1.0 mg/ml
Purification:	Affinity chromatography (> 95% (by SDS-PAGE)
Conjugation:	Unconjugated
Storage:	Store undiluted at 2-8°C for one month or (in aliquots) at -20°C for longer. Avoid repeated freezing and thawing.
Stability:	Shelf life: one year from despatch.
Predicted Protein Size:	~ 55 kDa
Gene Name:	histone deacetylase 1
Database Link:	<u>Entrez Gene 297893 Rat</u> <u>Entrez Gene 433759 Mouse</u> <u>Entrez Gene 3065 Human Q13547</u>



[View online »](#)

Background:	In the intact cell, DNA closely associates with histones and other nuclear proteins to form chromatin. The remodeling of chromatin is believed to be a critical component of transcriptional regulation and a major source of this remodeling is brought about by the acetylation of nucleosomal histones. Acetylation of lysine residues in the amino-terminal tail domain of histone results in an allosteric change in the nucleosomal conformation and an increased accessibility to transcription factors by DNA. Conversely, the deacetylation of histones is associated with transcriptional silencing. Several mammalian proteins have been identified as nuclear histone acetylases, including GCN5, PCAF (for p300/CBP-associated factor), p300/CBP and the TFIID subunit TAF II p250. Mammalian HDAC1 (also designated HD1), HDAC2 (also designated mammalian RPD3) and HDAC3, all of which are related to the yeast transcriptional regulator Rpd3p, have been identified as histone deacetylases.
Synonyms:	Histone deacetylase 1, HD1, RPD3L1
Protein Families:	Adult stem cells, Druggable Genome, Stem cell - Pluripotency, Stem cell relevant signaling - DSL/Notch pathway, Transcription Factors
Protein Pathways:	Cell cycle, Chronic myeloid leukemia, Huntington's disease, Notch signaling pathway, Pathways in cancer

Product images:


Immunohistochemistry (IHC) analyzes of HDAC1 antibody (Cat.-No.: [AP21036PU-N]) in paraffin-embedded human lung adenocarcinoma tissue.