

## Product datasheet for **AP21007PU-N**

### Tuberin (TSC2) Rabbit Polyclonal Antibody

#### Product data:

Product Type:	Primary Antibodies
Applications:	IHC
Recommended Dilution:	<b>Immunohistochemistry on Paraffin Sections:</b> 1/50-1/200.
Reactivity:	Human, Mouse, Rat
Host:	Rabbit
Clonality:	Polyclonal
Immunogen:	Synthetic peptide, corresponding to amino acids 1400-1500 of Human Tuberin.
Specificity:	This antibody detects endogenous levels of Tsc2 protein. (region surrounding Ala1468)
Formulation:	PBS, pH 7.2 State: Aff - Purified State: Liquid purified Ig fraction (> 95% by SDS-PAGE) Preservative: 0.05% Sodium Azide
Concentration:	1.0 mg/ml
Purification:	Immunoaffinity Chromatography
Conjugation:	Unconjugated
Storage:	Store undiluted at 2-8°C for one month or (in aliquots) at -20°C for longer. Avoid repeated freezing and thawing.
Stability:	Shelf life: one year from despatch.
Predicted Protein Size:	~ 200 kDa
Gene Name:	tuberous sclerosis 2
Database Link:	<a href="#">Entrez Gene 7249 Human P49815</a>



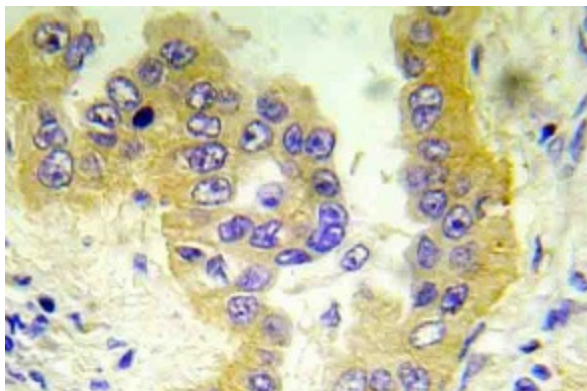
[View online »](#)

**Background:**

TSC2 is believed to be a tumor suppressor and is able to specifically stimulate the intrinsic GTPase activity of the Ras-related protein RAP1A and RAB5. TSC2 associates with hamartin in a cytosolic complex, possibly acting as a chaperone for hamartin. It may have a function in vesicular transport, but may also play a role in the regulation of cell growth arrest and in the regulation of transcription mediated by steroid receptors. Interaction between TSC1 and TSC2 may facilitate vesicular docking. Mutations in TSC2 lead to tuberous sclerosis complex.

**Synonyms:**

Tuberous sclerosis 2 protein, TSC4

**Product images:**


Immunohistochemistry (IHC) analyzes of Tsc2 antibody in paraffin-embedded human lung carcinoma tissue.