

## Product datasheet for **AP21003PU-N**

### LKB1 (STK11) Rabbit Polyclonal Antibody

#### Product data:

Product Type:	Primary Antibodies
Applications:	IHC, WB
Recommended Dilution:	<b>Western blot:</b> 1/500 - 1/1000. <b>Immunohistochemistry on paraffin sections</b> 1/50 - 1/200.
Reactivity:	Human, Mouse
Host:	Rabbit
Clonality:	Polyclonal
Specificity:	This antibody detects endogenous levels of LKB1 protein. (region surrounding Pro340)
Formulation:	Phosphate buffered saline (PBS), pH 7.2. State: Aff - Purified State: Liquid purified Ig fraction Preservative: 0.05% sodium azide
Concentration:	1.0 mg/ml
Purification:	Affinity chromatography (> 95% (by SDS-PAGE)
Conjugation:	Unconjugated
Storage:	Store undiluted at 2-8°C for one month or (in aliquots) at -20°C for longer. Avoid repeated freezing and thawing.
Stability:	Shelf life: one year from despatch.
Predicted Protein Size:	~ 54 kDa
Gene Name:	serine/threonine kinase 11
Database Link:	<a href="#">Entrez Gene 20869 Mouse</a> <a href="#">Entrez Gene 6794 Human</a> <a href="#">Q15831</a>



[View online »](#)

**Background:**

LKB1, a member of the serine/threonine kinase family, is a tumor suppressor. Physically associates with p53, it regulates specific p53 dependent apoptosis pathways. LKB1 protein is present in both the cytoplasm and nucleus of living cells and translocates to mitochondria during apoptosis. Restoring LKB1 activity into cancer cell lines defective for its expression results in a G1 cell cycle arrest. Mutations in LKB1 gene are associated with Peutz Jeghers syndrome, an autosomal dominant disorder characterized by the growth of polyps in the gastrointestinal tract, pigmented macules on the skin and mouth, and other neoplasms. LKB1 functions as a master upstream protein kinase, regulating AMPK related kinases as well as AMPK. In vitro, LKB1 has been observed to directly phosphorylate threonine 172 of AMPK $\alpha$ , an event that is correlated with activation of this kinase. LKB1 has also been found to play a role in chromatin remodeling, cell cycle arrest, Wnt signaling, cell polarity, and energy metabolism.

**Synonyms:**

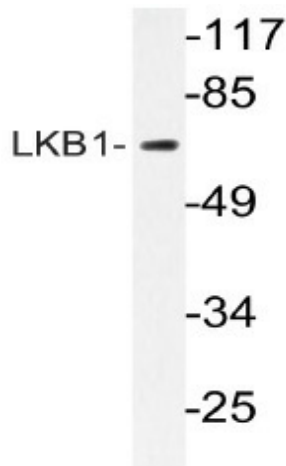
Serine/threonine-protein kinase 11, LKB1, PJS, NY-REN-19

**Protein Families:**

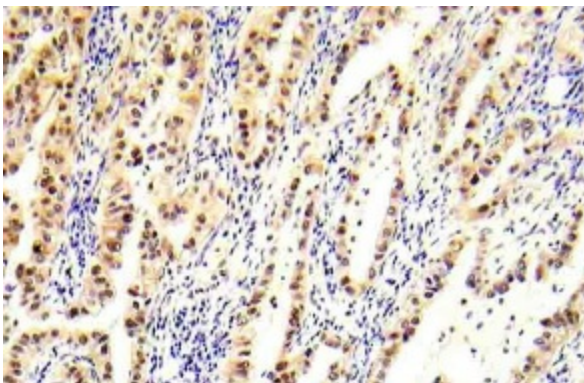
Druggable Genome, Protein Kinase

**Protein Pathways:**

Adipocytokine signaling pathway, mTOR signaling pathway

**Product images:**

Western blot (WB) analyzes of LKB1 antibody (Cat.-No.: AP21003PU-N) in extracts from CV-1 cells.



Immunohistochemistry (IHC) analyzes of LKB1 antibody (Cat.-No.: AP21003PU-N) in paraffin-embedded human lung carcinoma tissue.