

## Product datasheet for **AP20997PU-N**

### STAT1 Rabbit Polyclonal Antibody

#### Product data:

Product Type:	Primary Antibodies
Applications:	IHC, WB
Recommended Dilution:	<b>Western blot:</b> 1/500 - 1/1000. <b>Immunohistochemistry on paraffin sections</b> 1/50 - 1/200.
Reactivity:	Human, Mouse, Rat
Host:	Rabbit
Clonality:	Polyclonal
Specificity:	This antibody detects endogenous levels of STAT1 protein. (region surrounding Asp733)
Formulation:	Phosphate buffered saline (PBS), pH 7.2. State: Aff - Purified State: Liquid purified Ig fraction Preservative: 0.05% sodium azide
Concentration:	1.0 mg/ml
Purification:	Affinity chromatography (> 95% (by SDS-PAGE)
Conjugation:	Unconjugated
Storage:	Store undiluted at 2-8°C for one month or (in aliquots) at -20°C for longer. Avoid repeated freezing and thawing.
Stability:	Shelf life: one year from despatch.
Predicted Protein Size:	~ 87 kDa
Gene Name:	signal transducer and activator of transcription 1
Database Link:	<a href="#">Entrez Gene 20846 Mouse</a> <a href="#">Entrez Gene 25124 Rat</a> <a href="#">Entrez Gene 6772 Human P42224</a>



[View online »](#)

**Background:**

Membrane receptor signaling by various ligands, including interferons and growth hormones such as EGF, induces activation of JAK kinases which then leads to tyrosine phosphorylation of the various Stat transcription factors. Stat1 and Stat2 are induced by IFN-alpha and form a heterodimer which is part of the ISGF3 transcription factor complex. Although early reports indicate Stat3 activation by EGF and IL-6, it has been shown that Stat3beta appears to be activated by both while Stat3alpha is activated by EGF, but not by IL-6. Highest expression of Stat4 is seen in testis and myeloid cells. IL-12 has been identified as an activator of Stat4. Stat5 has been shown to be activated by prolactin and by IL-3. Stat6 is involved in IL-4 activated signaling pathways.

**Synonyms:**

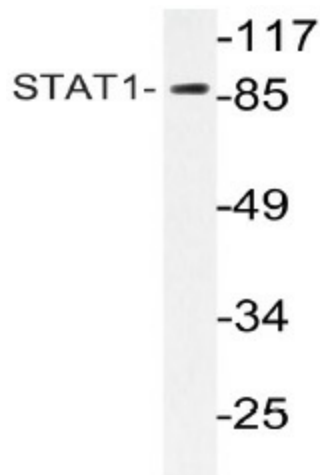
DKFZp686B04100; ISGF-3; OTTHUMP00000205845; STAT91

**Protein Families:**

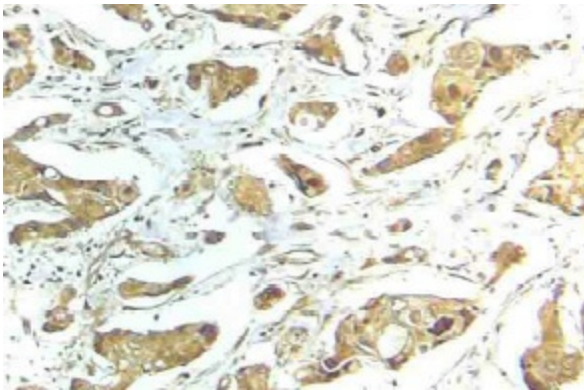
Druggable Genome, Transcription Factors

**Protein Pathways:**

Chemokine signaling pathway, Jak-STAT signaling pathway, Pancreatic cancer, Pathways in cancer, Toll-like receptor signaling pathway

**Product images:**

Western blot (WB) analyzes of SRC antibody (Cat.-No.: AP20997PU-N) in extracts from COLO205 cells.



Immunohistochemistry (IHC) analyzes of STAT1 antibody (Cat.-No.: AP20997PU-N) in paraffin-embedded human breast carcinoma tissue.