

## Product datasheet for **AP20996PU-M**

### SRC Rabbit Polyclonal Antibody

#### Product data:

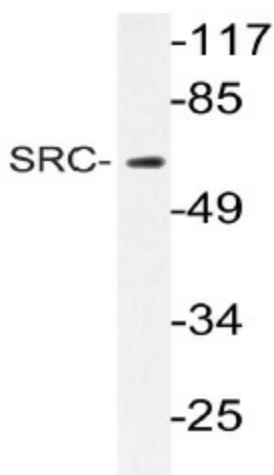
Product Type:	Primary Antibodies
Applications:	IHC, WB
Recommended Dilution:	<b>Western blot:</b> 1/500 - 1/1000. <b>Immunohistochemistry on paraffin sections</b> 1/50 - 1/200.
Reactivity:	Human, Mouse, Rat
Host:	Rabbit
Clonality:	Polyclonal
Specificity:	This antibody detects endogenous levels of SRC protein. (region surrounding asn535)
Formulation:	Phosphate buffered saline (PBS), pH 7.2. State: Aff - Purified State: Liquid purified Ig fraction Preservative: 0.05% sodium azide
Concentration:	1.0 mg/ml
Purification:	Affinity chromatography (> 95% (by SDS-PAGE)
Conjugation:	Unconjugated
Storage:	Store undiluted at 2-8°C for one month or (in aliquots) at -20°C for longer. Avoid repeated freezing and thawing.
Stability:	Shelf life: one year from despatch.
Predicted Protein Size:	~ 60, 169 kDa
Gene Name:	SRC proto-oncogene, non-receptor tyrosine kinase
Database Link:	<u><a href="#">Entrez Gene 20779 Mouse</a></u> <u><a href="#">Entrez Gene 83805 Rat</a></u> <u><a href="#">Entrez Gene 6714 Human</a></u> <u><a href="#">P12931</a></u>



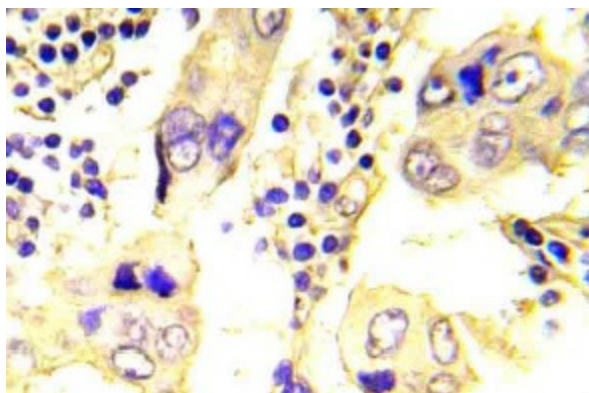
[View online »](#)

<b>Background:</b>	Src (also known as pp60src) is a non receptor Tyrosine Kinase involved in signal transduction in many biological systems and implicated in the development of human tumors. There are two critical phosphorylation sites of tyrosine on Src, tyrosine 418 and tyrosine 529 (referring to human Src sequence). The tyrosine 418 is located in the catalytic domain and is one of the autophosphorylation sites. Full catalytic activity of Src requires phosphorylation of tyrosine 418. The tyrosine 529 is located near the carboxyl terminus of Src and acts as a negative regulator, in that Src is held in the inactive form through an intramolecular interaction between the SH2 domain and the carboxyl terminus when tyrosine 529 is phosphorylated by Csk. This conformation blocks phosphorylation of tyrosine 418 at the catalytic domain, thereby preventing Src activation. When tyrosine 529 is dephosphorylated, tyrosine 418 can be maximally phosphorylated and Src becomes active.
<b>Synonyms:</b>	c-Src, pp60c-src
<b>Protein Families:</b>	Druggable Genome, ES Cell Differentiation/IPS, Protein Kinase, Stem cell relevant signaling - JAK/STAT signaling pathway
<b>Protein Pathways:</b>	Adherens junction, Endocytosis, Epithelial cell signaling in Helicobacter pylori infection, ErbB signaling pathway, Focal adhesion, Gap junction, GnRH signaling pathway, Tight junction, VEGF signaling pathway

### Product images:



Western blot (WB) analyzes of SRC antibody (Cat.- No.: [AP20996PU-N]) in extracts from 293 cells.



Immunohistochemistry (IHC) analyzes of SRC antibody (Cat.-No.: [AP20996PU-N]) in paraffin-embedded human breast carcinoma tissue.