

Product datasheet for **AP20985PU-N**

Histone H2A.X (H2AFX) Rabbit Polyclonal Antibody

Product data:

Product Type:	Primary Antibodies
Applications:	IHC, WB
Recommended Dilution:	Western blot: 1/500-1/1000. Immunohistochemistry on Paraffin Sections: 1/50-1/200.
Reactivity:	Human, Mouse, Rat
Host:	Rabbit
Clonality:	Polyclonal
Specificity:	This antibody detects endogenous levels of Histone H2A.X protein. (region surrounding Glu145)
Formulation:	Phosphate buffered saline (PBS), pH~7.2 State: Aff - Purified State: Liquid purified Ig fraction (> 95% pure by SDS-PAGE). Preservative: 0.05% Sodium Azide
Concentration:	1.0 mg/ml
Purification:	Affinity Chromatography using epitope-specific immunogen.
Conjugation:	Unconjugated
Storage:	Store undiluted at 2-8°C for one month or (in aliquots) at -20°C for longer. Avoid repeated freezing and thawing.
Stability:	Shelf life: one year from despatch.
Predicted Protein Size:	~15 kDa
Gene Name:	H2A histone family member X
Database Link:	Entrez Gene 15270 Mouse Entrez Gene 500987 Rat Entrez Gene 3014 Human P16104



[View online »](#)

Background:

H2A.X is a member of the histone H2A family, 1 of 5 families of histone proteins involved in nucleosomal organization of chromatin. H2A.X is synthesised in G1 as well as S phase and is known to be important for recombination between immunoglobulin switch regions. A very early step in the response of mammalian cells to DNA double-strand breaks is the phosphorylation of histone H2A.X at serine 139 at the sites of DNA damage. There is a predicted acetylation at residue 1 and ubiquitination at residue 119. Phosphorylated H2A.X promotes DNA repair and maintains genomic stability.

Synonyms:

H2a/x, H2AFX, H2AX

Protein Families:

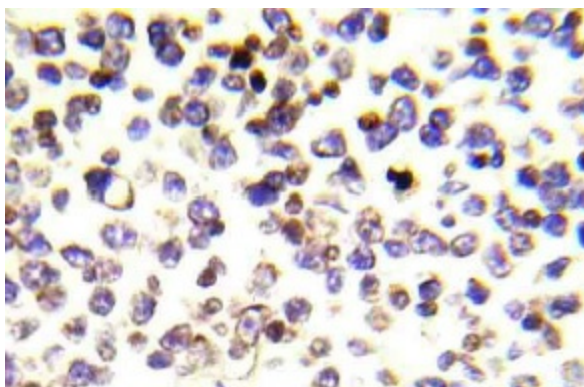
Druggable Genome

Protein Pathways:

Systemic lupus erythematosus

Product images:

Western blot (WB) analyzes of Histone H2A.X antibody (Cat.-No.: AP20985PU-N) in extracts from HeLa cells.



Immunohistochemistry (IHC) analyzes of Histone H2A.X antibody (Cat.-No.: AP20985PU-N) in paraffin-embedded human malignant lymphoma tissue.