

## Product datasheet for **AP20982PU-N**

### **H3FA (HIST1H3A) Rabbit Polyclonal Antibody**

#### **Product data:**

Product Type:	Primary Antibodies
Applications:	IHC, WB
Recommended Dilution:	<b>Western Blot:</b> 1/500-1/1000. <b>Immunohistochemistry on Paraffin Sections:</b> 1/50-1/200.
Reactivity:	Human, Mouse, Rat
Host:	Rabbit
Clonality:	Polyclonal
Specificity:	This antibody detects endogenous levels of Histone H3.1 protein.
Formulation:	Phosphate buffered saline (PBS), pH~7.2 State: Aff - Purified State: Liquid purified Ig fraction (> 95% pure by SDS-PAGE) Preservative: 0.05% Sodium Azide
Concentration:	1.0 mg/ml
Purification:	Affinity Chromatography using epitope-specific immunogen
Conjugation:	Unconjugated
Storage:	Store undiluted at 2-8°C for one month or (in aliquots) at -20°C for longer. Avoid repeated freezing and thawing.
Stability:	Shelf life: one year from despatch.
Predicted Protein Size:	~17 kDa
Gene Name:	histone cluster 1, H3a
Database Link:	<a href="#">Entrez Gene 360198 Mouse</a> <a href="#">Entrez Gene 679994 Rat</a> <a href="#">Entrez Gene 8350 Human</a> <a href="#">P68431</a>



[View online »](#)

**Background:**

In eukaryotes, DNA is wrapped around histone octamers to form the basic unit of chromatin structure. The octamer is composed of histones H2A, H2B, H3 and H4 and it associates with approximately 200 base pairs of DNA to form the nucleosome. The association of DNA with histones results in dense packing of chromatin, which restricts proteins involved in gene transcription from binding to DNA. Histone H1 is required for the condensation of nucleosome chains into higher order structures. Phosphorylation of histone H1 is thought to be involved in this process, although the exact nature of this role has yet to be elucidated. Evidence suggests that histone H1 is a part of a general repressor mechanism for stable repression of transcription, but it can also activate transcription of specific genes.

**Synonyms:**

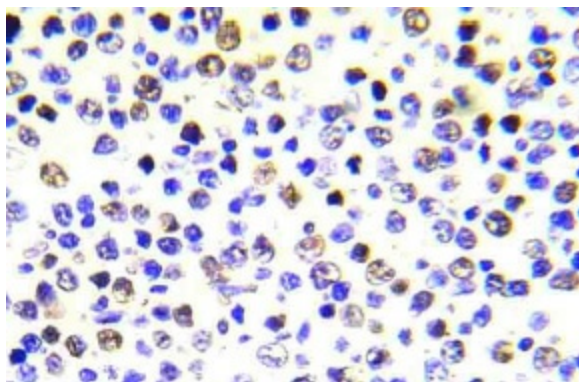
H3/a, H3/b, H3/c, H3/d, H3/f, H3/h, H3/i, H3/j, H3/k, H3/l, HIST1H3A, H3FA, HIST1H3B, HIST1H3C, HIST1H3D, HIST1H3E, HIST1H3F, HIST1H3G, HIST1H3H, HIST1H3I, HIST1H3J

**Protein Pathways:**

Systemic lupus erythematosus

**Product images:**


Western blot analysis of Histone H3.1 Antibody Cat.-No AP20982PU-N in extracts from COLO205 cells.



Immunohistochemistry analysis of Histone H3.1 Antibody Cat.-No AP20982PU-N in paraffin-embedded human malignant lymphoma tissue.