

Product datasheet for **AP20981PU-N**

GSK3 alpha (GSK3A) Rabbit Polyclonal Antibody

Product data:

| | |
|------------------------------|---|
| Product Type: | Primary Antibodies |
| Applications: | IHC, WB |
| Recommended Dilution: | Western Blot: 1/500 - 1/1000. Immunohistochemistry: 1/50 - 1/200. |
| Reactivity: | Human, Mouse, Rat |
| Host: | Rabbit |
| Clonality: | Polyclonal |
| Specificity: | GSK3alpha pAb detects endogenous levels of GSK3alpha protein. |
| Formulation: | Phosphate buffered saline (PBS) with 15 mM sodium azide, approx. pH 7.2. State: Aff - Purified State: Liquid purified Ig fraction |
| Concentration: | 1,0 mg/ml |
| Purification: | Affinity chromatography (> 95% (by SDS-PAGE) |
| Conjugation: | Unconjugated |
| Storage: | Store the antibody undiluted at 2-8°C for one month or (in aliquots) at -20°C for longer. Avoid repeated freezing and thawing. |
| Stability: | Shelf life: one year from despatch. |
| Gene Name: | glycogen synthase kinase 3 alpha |
| Database Link: | Entrez Gene 50686 Rat Entrez Gene 606496 Mouse Entrez Gene 2931 Human P49840 |



[View online »](#)

Background:

Glycogen synthase kinase 3, or GSK-3, is a serine/threonine, proline-directed kinase involved in a diverse array of signaling pathways, including glycogen synthesis and cellular adhesion, and has been implicated in Alzheimers disease. Two forms of GSK-3, designated GSK-3alpha and GSK-3beta, have been identified and differ in their subcellular localization. Tau, a microtubule-binding protein which serves to stabilize microtubules in growing axons, is found to be hyperphosphorylated in paired helical filaments (PHF), the major fibrous component of neurofibrillary lesions associated with Alzheimers disease. Hyperphosphorylation of Tau is thought to be the critical event leading to the assembly of PHF. Six Tau protein isoforms have been identified, all of which are phosphorylated by GSK-3. This presents the possibility that miscues in GSK-3 signaling contribute to the onset of Alzheimers disease.

Synonyms:

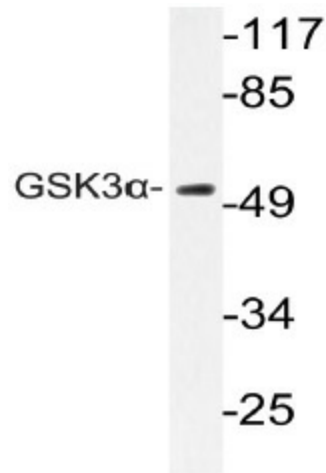
Glycogen synthase kinase-3 alpha, GSK3A, GSK-3 alpha, Factor A

Protein Families:

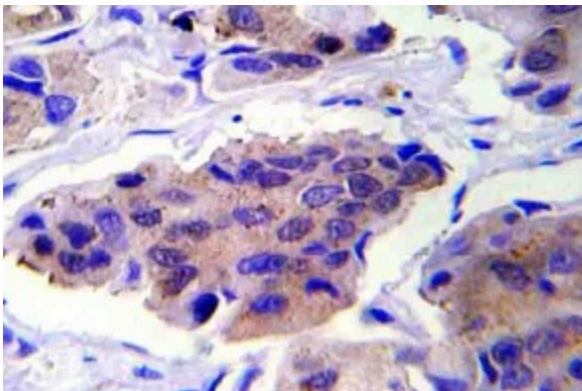
Druggable Genome, Protein Kinase

Protein Pathways:

Chemokine signaling pathway

Product images:

Western blot (WB) analyzes of GSK3alpha pAb in extracts from CV-1 cells.



Immunohistochemistry (IHC) analyzes of GSK3alpha pAb in paraffin-embedded human breast carcinoma tissue.