

Product datasheet for **AP20977PU-M**

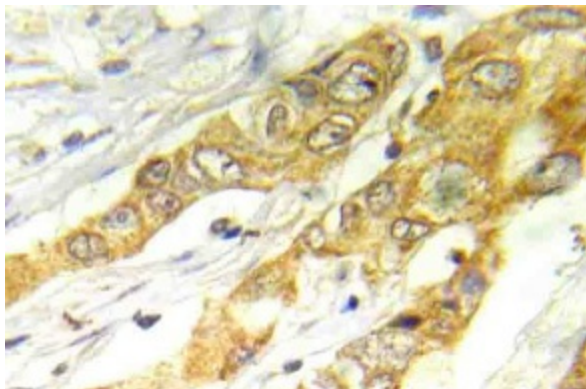
ERK1 / ERK2 Rabbit Polyclonal Antibody

Product data:

Product Type:	Primary Antibodies
Applications:	IHC
Recommended Dilution:	Immunohistochemistry on Paraffin Sections: 1/50-1/200.
Reactivity:	Human, Mouse, Rat
Host:	Rabbit
Clonality:	Polyclonal
Specificity:	This antibody detects endogenous levels of ERK1/2 protein. (region surrounding Thr208)
Formulation:	Phosphate buffered saline (PBS), pH~7.2 State: Aff - Purified State: Liquid purified Ig fraction (> 95% by SDS-PAGE) Preservative: 0.05% Sodium Azide
Concentration:	1.0 mg/ml
Purification:	Affinity Chromatography using epitope-specific immunogen
Conjugation:	Unconjugated
Storage:	Store undiluted at 2-8°C for one month or (in aliquots) at -20°C for longer. Avoid repeated freezing and thawing.
Stability:	Shelf life: one year from despatch.
Predicted Protein Size:	~ 42,44 kDa
Background:	The activation of signal transduction pathways by growth factors, hormones and neurotransmitters is mediated through two closely related MAP kinases, p44 and p42, designated extracellular-signal related kinase 1 (ERK 1) and ERK 2, respectively. ERK proteins are regulated by dual phosphorylation at specific tyrosine and Threonine sites mapping within a characteristic Thr- Glu-Tyr motif. Phosphorylation at both the Thr and Tyr residues is required for full enzymatic activation. In response to activation, MAP kinases phosphorylate downstream components on Serine and Threonine. Upstream MAP kinase regulators include MAP kinase kinase (MEK), MEK kinase and Raf-1. The ERK family has three additional members: ERK 3, ERK 5 and ERK 6.
Synonyms:	ERK-1/ERK-2, MAPK1/MAPK2, P42/P44-MAPK



[View online »](#)

Product images:

Immunohistochemistry (IHC) analyzes of ERK1/2 antibody (Cat.-No.: [AP20977PU-N]) in paraffin-embedded human breast carcinoma tissue.