

## Product datasheet for **AP20976PU-M**

### EIF4E Rabbit Polyclonal Antibody

#### Product data:

Product Type:	Primary Antibodies
Applications:	IHC, WB
Recommended Dilution:	<b>Western blot:</b> 1/500 - 1/1000. <b>Immunohistochemistry on paraffin sections</b> 1/50 - 1/200.
Reactivity:	Human, Mouse, Rat
Host:	Rabbit
Clonality:	Polyclonal
Specificity:	This antibody detects endogenous levels of eIF4E protein. (region surrounding Arg215)
Formulation:	Phosphate buffered saline (PBS), pH 7.2. State: Aff - Purified State: Liquid purified Ig fraction Preservative: 0.05% sodium azide
Concentration:	1.0 mg/ml
Purification:	Affinity chromatography (> 95% (by SDS-PAGE)
Conjugation:	Unconjugated
Storage:	Store undiluted at 2-8°C for one month or (in aliquots) at -20°C for longer. Avoid repeated freezing and thawing.
Stability:	Shelf life: one year from despatch.
Predicted Protein Size:	~ 25 kDa
Gene Name:	eukaryotic translation initiation factor 4E
Database Link:	<u><a href="#">Entrez Gene 13684 Mouse</a></u> <u><a href="#">Entrez Gene 117045 Rat</a></u> <u><a href="#">Entrez Gene 1977 Human</a></u> <u><a href="#">P06730</a></u>



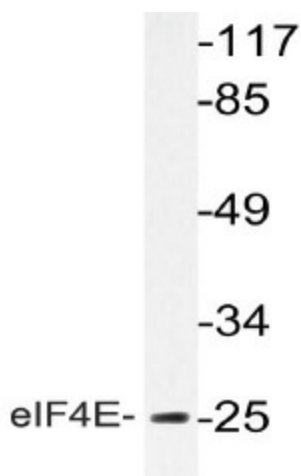
[View online »](#)

**Background:** eIF4E, a protein modulates translation of maternal mRNAs in early embryos before the onset of zygotic transcription. eIF4E also influences the overall rate of translation. eIF4E binds to the 7 methyl GTP cap structure of eukaryotic mRNAs. Phosphorylation of eIF4E on serine 209 regulates the affinity of this protein for the 7 methyl GTP cap and/or RNA. Phosphorylation also enhances the interaction of eIF4E with eIF4G, which form a complex known as eIF4F. eIF4E phosphorylation is correlated with increased translational rate in a number of cell types. Several kinases are currently being investigated as potential regulators of eIF4E including PKC and/or the MAP kinase activated Mnk.

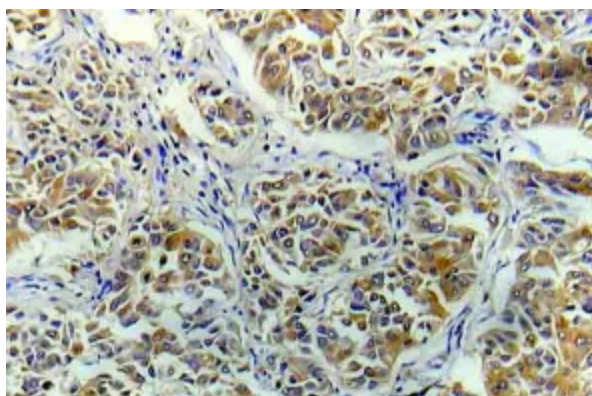
**Synonyms:** eIF-4F 25 kDa subunit, EIF-4E, EIF4EL1, EIF4F

**Protein Pathways:** Insulin signaling pathway, mTOR signaling pathway

### Product images:



Western blot (WB) analyzes of eIF4E antibody (Cat.-No.: [AP20976PU-N]) in extracts from NIH/3T3 cells.



Immunohistochemistry (IHC) analyzes of eIF4E antibody (Cat.-No.: [AP20976PU-N]) in paraffin-embedded human breast carcinoma tissue.