

Product datasheet for **AP20972PU-N**

EGFR Rabbit Polyclonal Antibody

Product data:

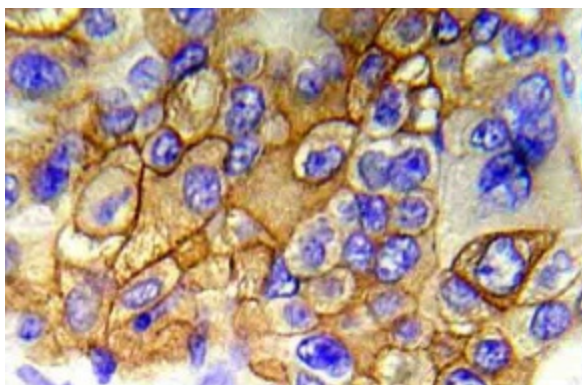
Product Type:	Primary Antibodies
Applications:	IHC
Recommended Dilution:	Immunohistochemistry: 1/50 - 1/200.
Reactivity:	Human, Mouse, Rat
Host:	Rabbit
Clonality:	Polyclonal
Specificity:	EGFR pAb detects endogenous levels of EGFR protein.
Formulation:	Phosphate buffered saline (PBS) with 15 mM sodium azide, approx. pH 7.2. State: Aff - Purified State: Liquid purified Ig fraction
Concentration:	1,0 mg/ml
Purification:	Affinity chromatography (> 95% (by SDS-PAGE)
Conjugation:	Unconjugated
Storage:	Store the antibody undiluted at 2-8°C for one month or (in aliquots) at -20°C for longer. Avoid repeated freezing and thawing.
Stability:	Shelf life: one year from despatch.
Gene Name:	epidermal growth factor receptor
Database Link:	Entrez Gene 13649 Mouse Entrez Gene 24329 Rat Entrez Gene 1956 Human P00533
Background:	The EGF receptor family comprises several related receptor tyrosine kinases that are frequently overexpressed in a variety of carcinomas. Members of this receptor family include EGFR (HER1), Neu (ErbB-2, HER2), ErbB-3 (HER3), and ErbB-4 (HER4), which form either homodimers or heterodimers upon ligand binding. Exons in the EGFR gene product are frequently either deleted or duplicated to produce deletion mutants (DM) or tandem duplication mutants (TDM), respectively, which are detected at various molecular weights. EGFR binds several ligands, including epidermal growth factor (EGF), transforming growth factor alpha (TGFalpha), amphiregulin and heparin binding-EGF (HB-EGF). Ligand binding promotes the internalization of EGFR via Clathrincoated pits and its subsequent degradation in response to its intrinsic tyrosine kinase.



[View online »](#)

Synonyms:	Epidermal growth factor receptor, EGF Receptor, erbB-1, c-ErbB-1
Protein Families:	Adult stem cells, Cancer stem cells, Druggable Genome, ES Cell Differentiation/IPS, Protein Kinase, Secreted Protein, Stem cell relevant signaling - JAK/STAT signaling pathway, Transmembrane
Protein Pathways:	Adherens junction, Bladder cancer, Calcium signaling pathway, Colorectal cancer, Cytokine-cytokine receptor interaction, Dorso-ventral axis formation, Endocytosis, Endometrial cancer, Epithelial cell signaling in Helicobacter pylori infection, ErbB signaling pathway, Focal adhesion, Gap junction, Glioma, GnRH signaling pathway, MAPK signaling pathway, Melanoma, Non-small cell lung cancer, Pancreatic cancer, Pathways in cancer, Prostate cancer, Regulation of actin cytoskeleton

Product images:



Immunohistochemistry (IHC) analyzes of EGFR pAb in paraffin-embedded human breast carcinoma tissue.