

Product datasheet for **AP20951PU-M**

IGF1 Receptor (IGF1R) pTyr980 Rabbit Polyclonal Antibody

Product data:

Product Type:	Primary Antibodies
Applications:	IHC
Recommended Dilution:	Immunohistochemistry on paraffin sections 1/50 - 1/200.
Reactivity:	Human, Mouse, Rat
Host:	Rabbit
Clonality:	Polyclonal
Specificity:	This antibody detects endogenous levels of IGF1R protein only when phosphorylated at Tyr980.
Formulation:	Phosphate buffered saline (PBS), pH 7.2 State: Aff - Purified State: Liquid purified Ig fraction Preservative: 0.05% sodium azide
Concentration:	1.0 mg/ml
Purification:	Affinity chromatography (> 95% (by SDS-PAGE)
Conjugation:	Unconjugated
Storage:	Store undiluted at 2-8°C for one month or (in aliquots) at -20°C for longer. Avoid repeated freezing and thawing.
Stability:	Shelf life: one year from despatch.
Predicted Protein Size:	~ 95,155 kDa
Gene Name:	insulin like growth factor 1 receptor
Database Link:	Entrez Gene 16001 Mouse Entrez Gene 25718 Rat Entrez Gene 3480 Human P08069



[View online »](#)

Background:

Receptor tyrosine kinases (RTKs) are transmembrane molecular scaffolds that influence cellular processes including the cell cycle, cell migration, cell metabolism, cell survival, proliferation and differentiation. Insulin-like growth factor-I receptor (IGF-IR) is an RTK that stimulates growth in many different cell types, blocks apoptosis, acts as an intermediate of many growth hormone responses and may stimulate the growth of some types of cancer. The IGF-IR cognate ligand insulin-like growth factor-I (IGF-I) promotes association of IGFIR with Shc, GRB2 and Sos 1, which initiates Ras and ERK kinase cascades, thereby modifying transcription factor activity, such as activation of the Elk transcription factors. The modular phosphotyrosine binding (PTB) domains of insulin receptor substrate (IRS)-1 and -2 can associate with active IGF-IR and initiate phosphatidylinositol 3-kinase-dependent downstream signals. The human IGFIR gene maps to chromosome 15q26.3 and encodes a 1,376 amino acid precursor protein that cleaves into alpha and beta subunits. The human IGF-IIIR gene maps to chromosome 6q26 and encodes a 2,491 amino acid transmembrane protein.

Synonyms:

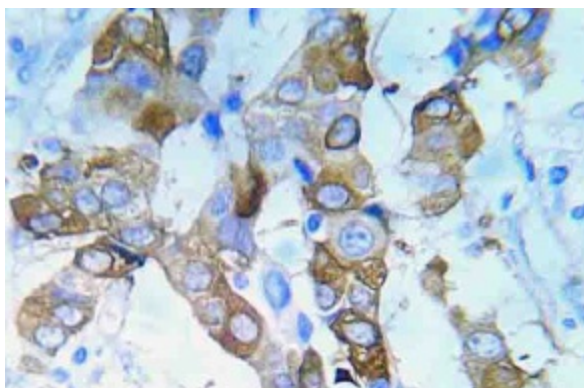
IGF-I receptor, IGF1 Receptor

Protein Families:

Druggable Genome, Protein Kinase, Transmembrane

Protein Pathways:

Adherens junction, Colorectal cancer, Endocytosis, Focal adhesion, Glioma, Long-term depression, Melanoma, Oocyte meiosis, Pathways in cancer, Progesterone-mediated oocyte maturation, Prostate cancer

Product images:


Immunohistochemistry (IHC) analyzes of p-IGF1R antibody (Cat.-No.: [AP20951PU-N]) in paraffin-embedded human lung adenocarcinoma tissue.