

## Product datasheet for **AP20948PU-N**

### Her2 (ERBB2) pTyr877 Rabbit Polyclonal Antibody

#### Product data:

Product Type:	Primary Antibodies
Applications:	IHC, WB
Recommended Dilution:	Western Blot: 1/500 - 1/1000. Immunohistochemistry: 1/50 - 1/200. Immunoprecipitation: 1/50 - 1/200.
Reactivity:	Human, Mouse, Rat
Host:	Rabbit
Clonality:	Polyclonal
Specificity:	p-HER2 (pTyr877) pAb detects endogenous levels of p-HER2 protein..
Formulation:	Phosphate buffered saline (PBS) with 15 mM sodium azide, approx. pH 7.2. State: Aff - Purified State: Liquid purified Ig fraction
Concentration:	1,0 mg/ml
Purification:	Affinity chromatography (> 95% (by SDS-PAGE)
Conjugation:	Unconjugated
Storage:	Store the antibody undiluted at 2-8°C for one month or (in aliquots) at -20°C for longer. Avoid repeated freezing and thawing.
Stability:	Shelf life: one year from despatch.
Gene Name:	erb-b2 receptor tyrosine kinase 2
Database Link:	<a href="#">Entrez Gene 13866 Mouse</a> <a href="#">Entrez Gene 24337 Rat</a> <a href="#">Entrez Gene 2064 Human P04626</a>



[View online »](#)

**Background:**

The EGF receptor family comprises several related receptor tyrosine kinases that are frequently overexpressed in a variety of carcinomas. Members of this receptor family include EGFR (HER1), Neu (ErbB-2, HER2), ErbB-3 (HER3), and ErbB-4 (HER4), which form either homodimers or heterodimers upon ligand binding. Neu, a 185 kDa glycoprotein, undergoes transactivation upon heterodimerization with other EGF receptor family members. Neu heterodimerization with ErbB-3 recruits heregulin, which induces phosphoinositide (PI) 3-kinase activation. Activation of Neu potentiates tumor cell motility and protease secretion and invasion, and also modulates cell cycle checkpoint function, DNA repair and apoptotic responses. Amplification and/or overexpression of Neu occurs in 20-30% of breast carcinomas. Measurement of increased Neu expression can be a predictor of disease prognosis. Neu may also prove to be a promising target for therapeutic agents.

**Synonyms:**

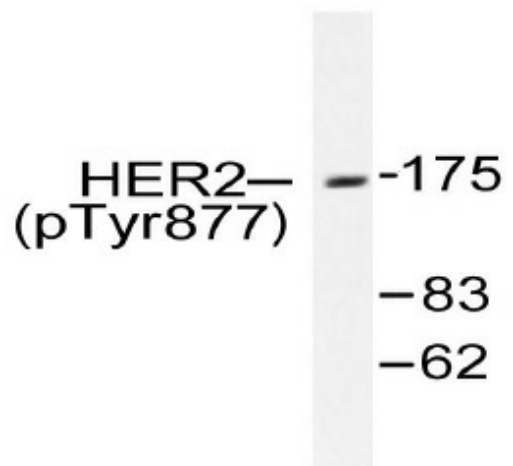
HER-2, NEU, p185erbB2, NGL, c-erbB-2, MNL19

**Protein Families:**

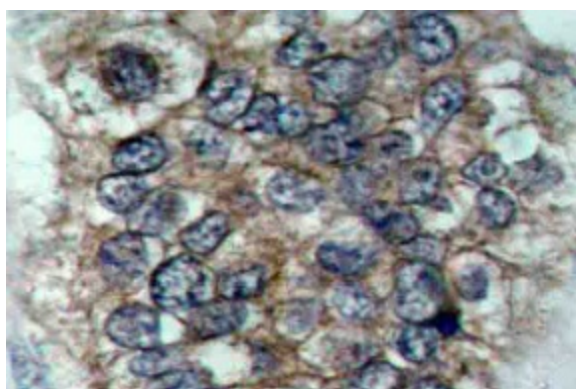
Druggable Genome, Protein Kinase, Transmembrane

**Protein Pathways:**

Adherens junction, Bladder cancer, Calcium signaling pathway, Endometrial cancer, ErbB signaling pathway, Focal adhesion, Non-small cell lung cancer, Pancreatic cancer, Pathways in cancer, Prostate cancer

**Product images:**


Western blot (WB) analysis of p-HER2 (pTyr877) pAb in extracts from MDA-MB-231 cells treated with EGF



Immunohistochemistry (IHC) analyzes of p-HER2 (pTyr877) pAb in paraffin-embedded human breast carcinoma tissue.