

Product datasheet for **AP20947PU-N**

HDAC1 pSer421/423 Rabbit Polyclonal Antibody

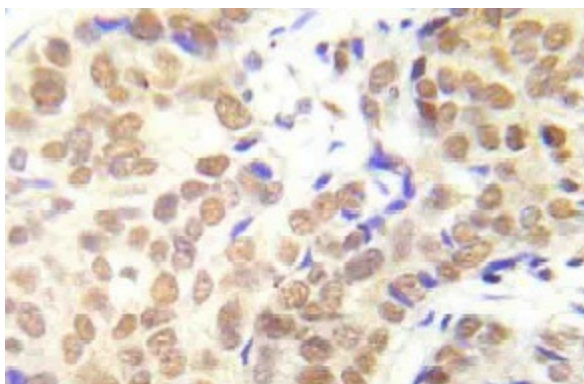
Product data:

Product Type:	Primary Antibodies
Applications:	IHC
Recommended Dilution:	Immunohistochemistry on paraffin sections 1/50 - 1/200.
Reactivity:	Human, Mouse, Rat
Host:	Rabbit
Clonality:	Polyclonal
Specificity:	This antibody detects endogenous levels of HDAC1 protein only when phosphorylated at Ser421/423.
Formulation:	Phosphate buffered saline (PBS), pH 7.2. State: Aff - Purified State: Liquid purified Ig fraction Preservative: 0.05% sodium azide
Concentration:	1.0 mg/ml
Purification:	Affinity chromatography (> 95% (by SDS-PAGE)
Conjugation:	Unconjugated
Storage:	Store undiluted at 2-8°C for one month or (in aliquots) at -20°C for longer. Avoid repeated freezing and thawing.
Stability:	Shelf life: one year from despatch.
Predicted Protein Size:	~ 55 kDa
Gene Name:	histone deacetylase 1
Database Link:	Entrez Gene 297893 Rat Entrez Gene 433759 Mouse Entrez Gene 3065 Human Q13547



[View online »](#)

- Background:** Reversible acetylation of highly conserved lysine residues within the N-terminal tail domains of core histones, plays an important role in transcriptional regulation, cell cycle progression and developmental events. Histone acetylation is a dynamic process determined by the net activities of histone acetyltransferases (HATs) and the competing enzymes histone deacetylases (HDACs). Histone deacetylases activities are often, but not always, associated with transcriptional repression and nucleosomal condensations. Recruitment of the multiprotein complexes to promoter sites occurs by many sequence specific DNA-binding proteins such as unliganded nuclear hormone receptors, DP1-E2F, YY1 and Rb family of transcription factors, transcriptional repressors and tumor suppressors (e.g. BRCA1). Aberrant recruitment of HDACs by certain oncoproteins may occur in certain neoplastic diseases.
- Synonyms:** Histone deacetylase 1, HD1, RPD3L1
- Protein Families:** Adult stem cells, Druggable Genome, Stem cell - Pluripotency, Stem cell relevant signaling - DSL/Notch pathway, Transcription Factors
- Protein Pathways:** Cell cycle, Chronic myeloid leukemia, Huntington's disease, Notch signaling pathway, Pathways in cancer

Product images:

Immunohistochemistry (IHC) analyzes of p-HDAC1 antibody (Cat.-No.: AP20947PU-N) in paraffin-embedded human lung adenocarcinoma tissue.