

Product datasheet for **AP20946PU-N**

GATA1 pSer310 Rabbit Polyclonal Antibody

Product data:

Product Type:	Primary Antibodies
Applications:	IHC
Recommended Dilution:	Immunohistochemistry on paraffin sections 1/50 - 1/200.
Reactivity:	Human, Mouse, Rat
Host:	Rabbit
Clonality:	Polyclonal
Specificity:	This antibody detects endogenous levels of p-GATA-1 protein only when phosphorylated at Ser310.
Formulation:	Phosphate buffered saline (PBS), pH 7.2. State: Aff - Purified State: Liquid purified Ig fraction Preservative: 0.05% sodium azide
Concentration:	1.0 mg/ml
Purification:	Affinity chromatography (> 95% (by SDS-PAGE)
Conjugation:	Unconjugated
Storage:	Store undiluted at 2-8°C for one month or (in aliquots) at -20°C for longer. Avoid repeated freezing and thawing.
Stability:	Shelf life: one year from despatch.
Predicted Protein Size:	~ 43 kDa
Gene Name:	GATA binding protein 1
Database Link:	Entrez Gene 14460 Mouse Entrez Gene 25172 Rat Entrez Gene 2623 Human P15976



[View online »](#)

Background:

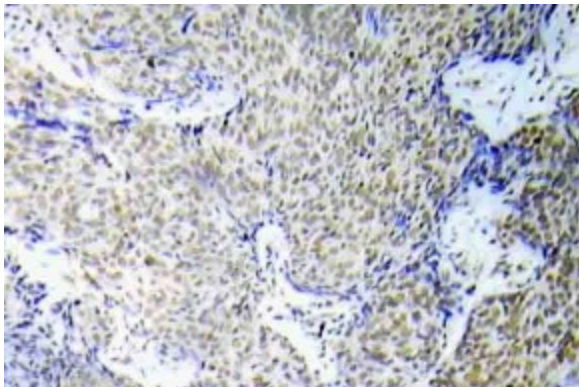
GATA1 (Globin transcription factor 1) is a Cys2/Cys2 zinc finger DNA binding protein that is expressed primarily in erythroid, megakaryocytic, mast cells and eosinophilic cells. It belongs to the GATA family of transcription factors. GATA1 is a transcriptional activator which probably serves as a general switch factor for erythroid development. It binds to DNA sites with the consensus sequence [AT]GATA[AG] within regulatory regions of globin genes and of other genes expressed in erythroid cells. The protein also plays an important role in erythroid development by regulating the switch of fetal hemoglobin to adult hemoglobin. Mutations in this gene have been associated with X-linked dyserythropoietic anemia and thrombocytopenia. Acquired somatic mutations in GATA1 occur in virtually all children with Down's Syndrome, congenital transient myeloproliferative syndrome (TMD) and acute megakaryocytic leukemia.

Synonyms:

GATA-1, ERYF1, GF1, Erythroid transcription factor, Eryf1, GATA-binding factor 1, GATA-1, GF-1, NF-E1 DNA-binding protein

Protein Families:

Adult stem cells, Druggable Genome, ES Cell Differentiation/IPS, Transcription Factors

Product images:

Immunohistochemistry (IHC) analyzes of p-GATA-1 antibody (Cat.-No.: AP20946PU-N) in paraffin-embedded human lung adenocarcinoma tissue.