

## Product datasheet for **AP20933PU-N**

### Cofilin 1 (CFL1) pSer3 Rabbit Polyclonal Antibody

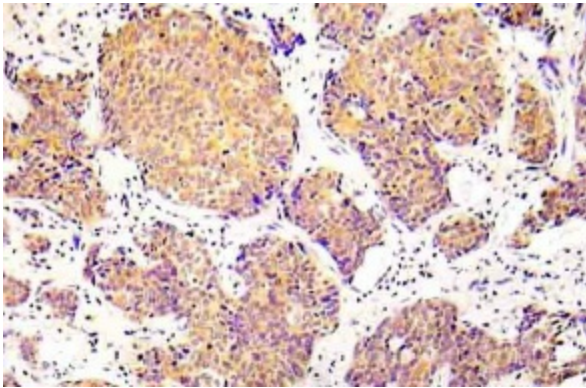
#### Product data:

Product Type:	Primary Antibodies
Applications:	IHC
Recommended Dilution:	<b>Immunohistochemistry on paraffin sections</b> 1/50 - 1/200.
Reactivity:	Human, Mouse, Rat
Host:	Rabbit
Clonality:	Polyclonal
Specificity:	This antibody detects endogenous levels of p-COFILN1 protein only when phosphorylated at Ser3.
Formulation:	Phosphate buffered saline (PBS), pH 7.2. State: Aff - Purified State: Liquid purified Ig fraction Preservative: 0.05% sodium azide
Concentration:	1.0 mg/ml
Purification:	Affinity chromatography (> 95% (by SDS-PAGE)
Conjugation:	Unconjugated
Storage:	Store undiluted at 2-8°C for one month or (in aliquots) at -20°C for longer. Avoid repeated freezing and thawing.
Stability:	Shelf life: one year from despatch.
Predicted Protein Size:	~ 19 kDa
Gene Name:	cofilin 1
Database Link:	<a href="#">Entrez Gene 12631 Mouse</a> <a href="#">Entrez Gene 29271 Rat</a> <a href="#">Entrez Gene 1072 Human P23528</a>



[View online »](#)

- Background:** Cofilin, a member of the ADF/cofilin family is actually a protein with 70% sequence homology to ADF, making it part of the ADF/cofilin family of small ADP-binding proteins. The protein binds to actin monomers and filaments, G actin and F actin, respectively. Cofilin causes depolymerization at the minus end of filaments, thereby preventing their reassembly. The protein is known to sever actin filaments by creating more positive ends on filament fragments. Cofilin/ADF(destrin) is likely to sever F-actin without capping and prefers ADP-actin. These monomers can be recycled by profilin, activating monomers to go back into filament form again by an ADP-to-ATP exchange. ATP-actin is then available for assembly.
- Synonyms:** CFL1, CFL, p18
- Protein Families:** Druggable Genome
- Protein Pathways:** Axon guidance, Fc gamma R-mediated phagocytosis, Regulation of actin cytoskeleton

**Product images:**

Immunohistochemistry (IHC) analyzes of p-COFLIN1 (pSer3) antibody (Cat.-No.: AP20933PU-N) in paraffin-embedded human lung adenocarcinoma tissue.