

Product datasheet for **AP20929PU-M**

Chk1 (CHEK1) pSer345 Rabbit Polyclonal Antibody

Product data:

Product Type:	Primary Antibodies
Applications:	IHC
Recommended Dilution:	Immunohistochemistry: 1/50 - 1/200.
Reactivity:	Human, Mouse, Rat
Host:	Rabbit
Clonality:	Polyclonal
Specificity:	p-Chk1 (pSer345) pAb detects endogenous levels of p-Chk1 protein.
Formulation:	Phosphate buffered saline (PBS) with 15 mM sodium azide, approx. pH 7.2. State: Aff - Purified State: Liquid purified Ig fraction
Concentration:	1,0 mg/ml
Purification:	Affinity chromatography (> 95% (by SDS-PAGE)
Conjugation:	Unconjugated
Storage:	Store the antibody undiluted at 2-8°C for one month or (in aliquots) at -20°C for longer. Avoid repeated freezing and thawing.
Stability:	Shelf life: one year from despatch.
Gene Name:	checkpoint kinase 1
Database Link:	Entrez Gene 12649 Mouse Entrez Gene 140583 Rat Entrez Gene 1111 Human O14757



[View online »](#)

Background:

Cell cycle events are regulated by the sequential activation and deactivation of cyclin dependent kinases (Cdks) and by proteolysis of cyclins. Chk1 and Chk2 are involved in these processes as regulators of Cdks. Chk1 and Chk2 both function as essential components in the G2 DNA damage checkpoint by phosphorylating Cdc25C in response to DNA damage. Phosphorylation inhibits Cdc25C activity, thereby blocking mitosis. Cdc25A, Cdc25B and Cdc25C protein tyrosine phosphatases function as mitotic activators by dephosphorylating Cdc2 p34 on regulatory tyrosine residues. It has also been shown that Chk1 can phosphorylate Wee 1 in vitro, providing evidence that the hyperphosphorylated form of Wee 1, seen in cells delayed by Chk1 overexpression, is due to phosphorylation by Chk1. Chk1 is phosphorylated on Serine 345 (S345) in response to UV, IR and hydroxyurea (HU). Chk1 plays an essential role in the mammalian DNA damage checkpoint, embryonic development and tumor suppression.

Synonyms:

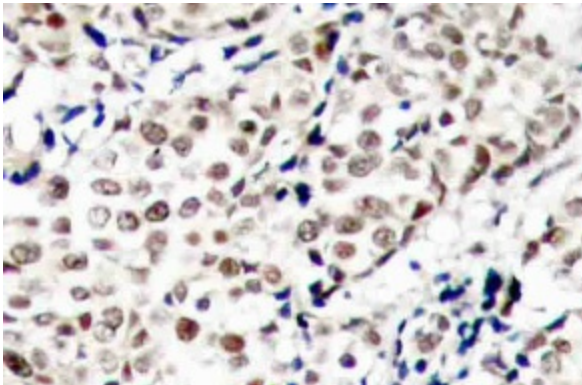
CHEK1, CHEK-1

Protein Families:

Druggable Genome, Protein Kinase, Stem cell - Pluripotency

Protein Pathways:

Cell cycle, p53 signaling pathway

Product images:


Immunohistochemistry (IHC) analysis of p-Chk1 (pSer345) pAb in paraffin-embedded human breast carcinoma tissue