

Product datasheet for **AP20925PU-M**

ASK1 (MAP3K5) pSer966 Rabbit Polyclonal Antibody

Product data:

Product Type:	Primary Antibodies
Applications:	IHC, WB
Recommended Dilution:	Western blot: 1/500 - 1/1000. Immunohistochemistry: 1/50 - 1/200.
Reactivity:	Human, Mouse, Rat
Host:	Rabbit
Clonality:	Polyclonal
Specificity:	This antibody detects endogenous levels of p-ASK1 protein only when phosphorylated at Ser966.
Formulation:	Phosphate buffered saline (PBS), pH 7.2. State: Aff - Purified State: Liquid purified Ig fraction Preservative: 0.05% sodium azide
Concentration:	1.0 mg/ml
Purification:	Affinity chromatography (> 95% (by SDS-PAGE)
Conjugation:	Unconjugated
Storage:	Store undiluted at 2-8°C for one month or (in aliquots) at -20°C for longer. Avoid repeated freezing and thawing.
Stability:	Shelf life: one year from despatch.
Predicted Protein Size:	~ 155 kDa
Gene Name:	mitogen-activated protein kinase kinase kinase 5
Database Link:	<u>Entrez Gene 26408 Mouse</u> <u>Entrez Gene 365057 Rat</u> <u>Entrez Gene 4217 Human</u> <u>Q99683</u>



[View online »](#)

Background:

Mitogen-activated protein (MAP) kinase cascades are activated by various extracellular stimuli including growth factors. The MEK kinases (also called MAP kinase kinase kinases) phosphorylate and activate the MAP kinases, including ERK, JNK and p38. The MEK kinases characterized to date include Raf-1, Raf-B, MOS, MEK kinase-1, MEK kinase-2, MEK kinase-3, MEK kinase-4 and ASK 1 (also designated MEK kinase-5). MEK kinase-1 has been shown to phosphorylate MEK-1 via a Raf-independent pathway. Evidence suggests that MEK-3 is preferentially activated by MEK kinase-3 and that MEK-4 is activated by both MEK kinase-2 and MEK kinase-3. MEK kinase-4 has been shown to specifically activate the JNK pathway. ASK 1 activates both MEK-4 and MEK-3/MEK-6 pathways.

Synonyms:

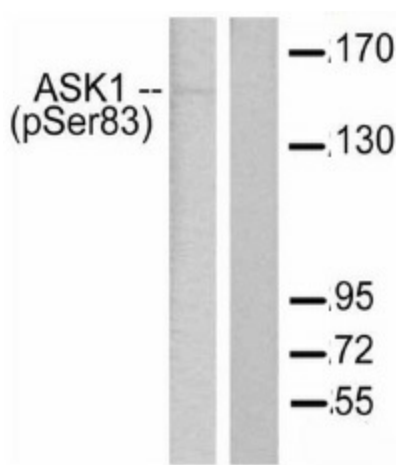
MAPK/ERK kinase kinase 5, MAPKKK5, MAP3K5

Protein Families:

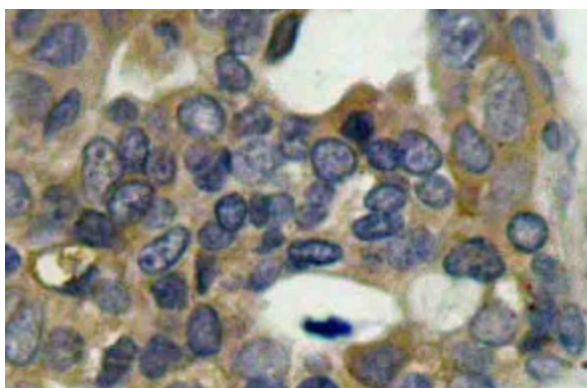
Druggable Genome, Protein Kinase

Protein Pathways:

Amyotrophic lateral sclerosis (ALS), MAPK signaling pathway, Neurotrophin signaling pathway

Product images:


Western blot (WB) analysis of p-ASK1 antibody (Cat.-No.: [AP20925PU-N]) in paraffin-embedded human breast carcinoma tissue.



Immunohistochemistry (IHC) analyzes of p-ASK1 antibody (Cat.-No.: [AP20925PU-N]) in paraffin-embedded human breast carcinoma tissue