

## Product datasheet for **AP20914PU-N**

### Tuberin (TSC2) pSer1254 Rabbit Polyclonal Antibody

#### Product data:

Product Type:	Primary Antibodies
Applications:	IHC
Recommended Dilution:	<b>Immunohistochemistry on Paraffin Sections:</b> 1/50-1/200.
Reactivity:	Human
Host:	Rabbit
Clonality:	Polyclonal
Immunogen:	Synthetic phosphopeptide derived from human Tuberin around the phosphorylation site of Serine 1254.
Specificity:	This antibody detects endogenous levels of p-Tsc2 protein only when phosphorylated at Ser1254.
Formulation:	PBS, pH 7.2 State: Aff - Purified State: Liquid purified Ig fraction (> 95% by SDS-PAGE) Preservative: 0.05% Sodium Azide
Concentration:	1.0 mg/ml
Purification:	Immunoaffinity Chromatography
Conjugation:	Unconjugated
Storage:	Store undiluted at 2-8°C for one month or (in aliquots) at -20°C for longer. Avoid repeated freezing and thawing.
Stability:	Shelf life: one year from despatch.
Predicted Protein Size:	~ 200 kDa
Gene Name:	tuberous sclerosis 2
Database Link:	<a href="#">Entrez Gene 7249 Human P49815</a>

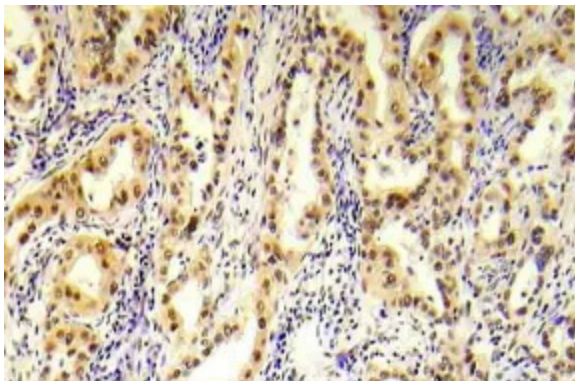
[View online »](#)

**Background:**

Tuberin, or TSC2 (Tuberous sclerosis complex), is implicated as a tumor suppressor. It may function in vesicular transport, and may also play a role in the regulation of cell growth arrest and in the regulation of transcription mediated by steroid receptors. Interaction between hamartin (TSC1) and tuberin may facilitate vesicular docking. It specifically stimulates the intrinsic GTPase activity of the Ras related protein RAP1A and RAB5, suggesting a possible mechanism for its role in regulating cellular growth. Mutations in tuberin lead to constitutive activation of RAP1A in tumors. At least three isoforms of Tuberin exist.

**Synonyms:**

Tuberous sclerosis 2 protein, TSC4

**Product images:**


Immunohistochemistry (IHC) analyzes of p-Tsc2 antibody in paraffin-embedded human prostate carcinoma tissue.