

Product datasheet for **AP20913PU-N**

LKB1 (STK11) pSer428 Rabbit Polyclonal Antibody

Product data:

Product Type:	Primary Antibodies
Applications:	IHC, WB
Recommended Dilution:	Western blot: 1/500-1/1000. Immunohistochemistry on Paraffin Sections: 1/50-1/200.
Reactivity:	Human
Host:	Rabbit
Clonality:	Polyclonal
Specificity:	This antibody detects endogenous levels of LKB1 protein only when phosphorylated at Serine 428.
Formulation:	Phosphate buffered saline (PBS), pH~7.2 State: Aff - Purified State: Liquid purified Ig fraction (> 95% pure by SDS-PAGE) Preservative: 0.05% Sodium Azide
Concentration:	1.0 mg/ml
Purification:	Affinity Chromatography using epitope-specific immunogen
Conjugation:	Unconjugated
Storage:	Store undiluted at 2-8°C for one month or (in aliquots) at -20°C for longer. Avoid repeated freezing and thawing.
Stability:	Shelf life: one year from despatch.
Predicted Protein Size:	~ 65 kDa
Gene Name:	serine/threonine kinase 11
Database Link:	Entrez Gene 6794 Human Q15831



[View online »](#)

Background:

Peutz-Jeghers syndrome (PJS) is a rare hereditary disease characterized by melanocytic macules lips, gastrointestinal hamartomatous polyps and an increased risk for many classes of cancer. LKB1 (also designated STK11 and PJS) has been identified as the gene mutated in PJS. LKB1 is a 433 amino acid Serine/Threonine kinase with strong homology to the *Xenopus* cytoplasmic protein kinase XEEK1 and weaker similarity to many other protein kinases. LKB1 is ubiquitously expressed and many frameshift, deletion and splicing mutations have been identified in PJS patients. Despite the increased risk of cancer for PJS patients, LKB1 does not appear to play a major role in colorectal, testicular or breast cancers.

Synonyms:

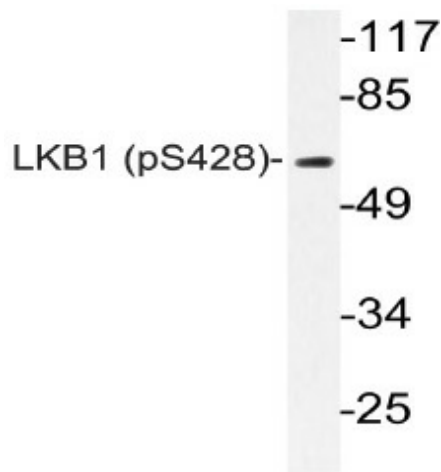
Serine/threonine-protein kinase 11, LKB1, PJS, NY-REN-19

Protein Families:

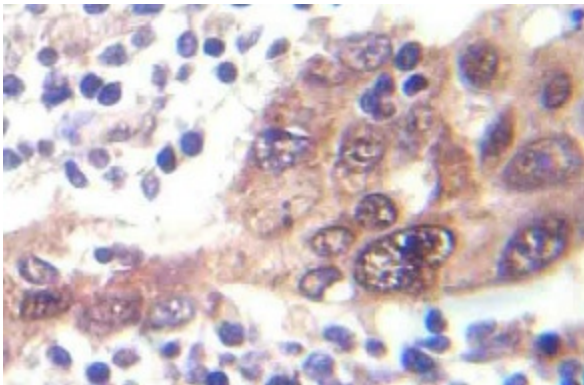
Druggable Genome, Protein Kinase

Protein Pathways:

Adipocytokine signaling pathway, mTOR signaling pathway

Product images:

Western blot analysis of p-LKB1 Antibody (Cat.-No AP20913PU-N) in extracts from CV-1 forsklin cells.



Immunohistochemistry analysis of p-LKB1 Antibody (Cat.-No AP20913PU-N) in paraffin-embedded human breast carcinoma tissue.