

Product datasheet for **AP20907PU-N**

STAT3 pSer727 Rabbit Polyclonal Antibody

Product data:

Product Type:	Primary Antibodies
Applications:	IHC, WB
Recommended Dilution:	Western Blot: 1/500 - 1/1000. Immunohistochemistry: 1/50 - 1/200 Immunoprecipitation: Use at an assay dependent dilution
Reactivity:	Human, Mouse, Rat
Host:	Rabbit
Clonality:	Polyclonal
Specificity:	p-Stat3 (pSer727) antibody detects endogenous levels of p-Stat3 protein.
Formulation:	Phosphate buffered saline (PBS) with 15 mM sodium azide, approx. pH 7.2. State: Aff - Purified State: Liquid purified Ig fraction
Concentration:	1,0 mg/ml
Purification:	Affinity chromatography (> 95% (by SDS-PAGE)
Conjugation:	Unconjugated
Storage:	Store the antibody undiluted at 2-8°C for one month or (in aliquots) at -20°C for longer. Avoid repeated freezing and thawing.
Stability:	Shelf life: one year from despatch.
Gene Name:	signal transducer and activator of transcription 3
Database Link:	Entrez Gene 20848 Mouse Entrez Gene 25125 Rat Entrez Gene 6774 Human P40763



[View online »](#)

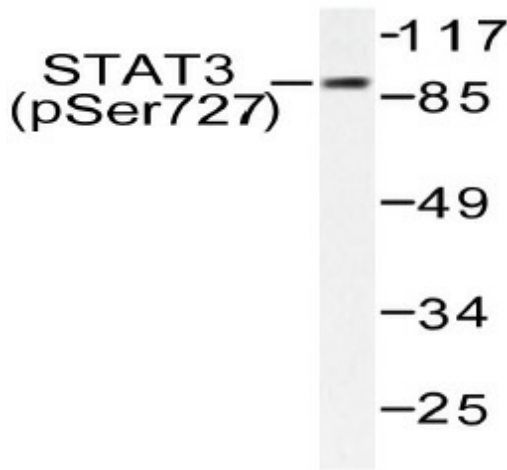
Background: Membrane receptor signaling by various ligands, including interferons and growth hormones such as EGF, induces activation of JAK kinases which then leads to tyrosine phosphorylation of the various Stat transcription factors. Stat1 and Stat2 are induced by IFN-alpha and form a heterodimer which is part of the ISGF3 transcription factor complex. Although early reports indicate Stat3 activation by EGF and IL-6, it has been shown that Stat3beta appears to be activated by both while Stat3alpha is activated by EGF, but not by IL-6. Highest expression of Stat4 is seen in testis and myeloid cells. IL-12 has been identified as an activator of Stat4. Stat5 has been shown to be activated by prolactin and by IL-3. Stat6 is involved in IL-4 activated signaling pathways.

Synonyms: STAT-3, Acute-phase response factor, APRF

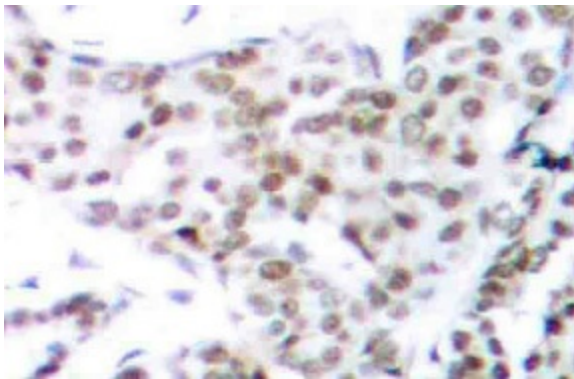
Protein Families: Druggable Genome, Transcription Factors

Protein Pathways: Acute myeloid leukemia, Adipocytokine signaling pathway, Chemokine signaling pathway, Jak-STAT signaling pathway, Pancreatic cancer, Pathways in cancer

Product images:



Western blot (WB) analysis of p-STAT3 (pSer727) pAb in extracts from HeLa cells.



Immunohistochemistry (IHC) analyzes of p-STAT3 (pSer727) pAb in paraffin-embedded human breast carcinoma tissue.