

## Product datasheet for **AP20906PU-M**

### STAT1 pSer727 Rabbit Polyclonal Antibody

#### Product data:

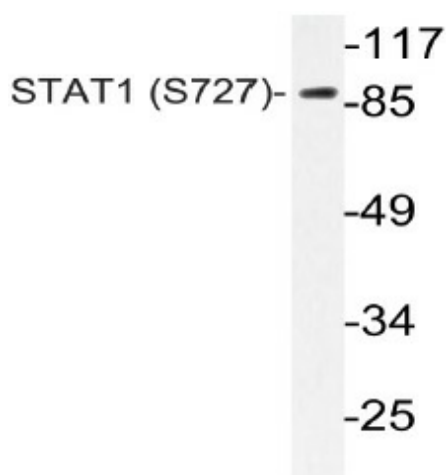
Product Type:	Primary Antibodies
Applications:	IHC, WB
Recommended Dilution:	<b>Western blot:</b> 1/500 - 1/1000. <b>Immunohistochemistry on paraffin sections</b> 1/50 - 1/200.
Reactivity:	Human, Mouse, Rat
Host:	Rabbit
Clonality:	Polyclonal
Specificity:	This antibody detects endogenous levels of p-STAT1 protein only when phosphorylated at Ser727.
Formulation:	Phosphate buffered saline (PBS), pH 7.2. State: Aff - Purified State: Liquid purified Ig fraction Preservative: 0.05% sodium azide
Concentration:	1.0 mg/ml
Purification:	Affinity chromatography (> 95% (by SDS-PAGE)
Conjugation:	Unconjugated
Storage:	Store the antibody undiluted at 2-8°C for one month or (in aliquots) at -20°C for longer. Avoid repeated freezing and thawing.
Stability:	Shelf life: one year from despatch.
Predicted Protein Size:	~ 87 kDa
Gene Name:	signal transducer and activator of transcription 1
Database Link:	<u><a href="#">Entrez Gene 20846 Mouse</a></u> <u><a href="#">Entrez Gene 25124 Rat</a></u> <u><a href="#">Entrez Gene 6772 Human</a></u> <u><a href="#">P42224</a></u>



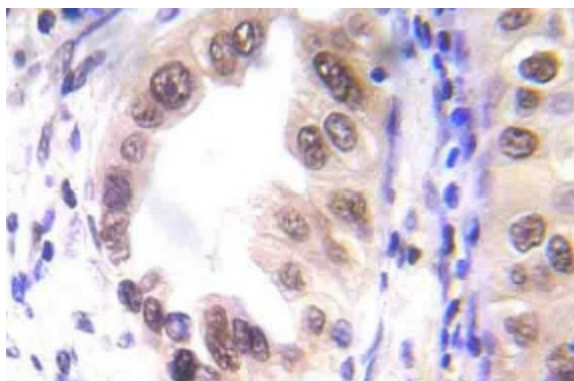
[View online »](#)

<b>Background:</b>	STAT1 is known to associate with the transcription factors p48, Sp1, and p300. STAT1 is activated by peptide hormones, growth factors and cytokines, particularly cytokines of the interferon family. STAT1 alpha and STAT1 beta isoforms arise by alternative splicing of a single gene. The only difference between the two proteins is that STAT1 beta lacks 38 carboxy terminal amino acids. Contained within these 38 terminal amino acids of STAT1 alpha is a critical serine residue (Ser 727) whose phosphorylation is required for maximal transcription activity induced by IFN gamma.
<b>Synonyms:</b>	DKFZp686B04100; ISGF-3; OTTHUMP00000205845; STAT91
<b>Protein Families:</b>	Druggable Genome, Transcription Factors
<b>Protein Pathways:</b>	Chemokine signaling pathway, Jak-STAT signaling pathway, Pancreatic cancer, Pathways in cancer, Toll-like receptor signaling pathway

### Product images:



Western blot (WB) analysis of p-STAT1 antibody (Cat.-No.: [AP20906PU-N]) in extracts from NIH/3T3 insulin cells.



Immunohistochemistry (IHC) analysis of p-STAT1 antibody (Cat.-No.: [AP20906PU-N]) in paraffin-embedded human lung carcinoma tissue.