

Product datasheet for **AP20905PU-N**

SRC pTyr529 Rabbit Polyclonal Antibody

Product data:

Product Type:	Primary Antibodies
Applications:	IHC, WB
Recommended Dilution:	Western blot: 1/500 - 1/1000. Immunohistochemistry on paraffin sections 1/50 - 1/200.
Reactivity:	Human, Mouse, Rat
Host:	Rabbit
Clonality:	Polyclonal
Specificity:	This antibody detects endogenous levels of SRC protein only when phosphorylated at Tyr29.
Formulation:	Phosphate buffered saline (PBS), pH 7.2. State: Aff - Purified State: Liquid purified Ig fraction Preservative: 0.05% sodium azide
Concentration:	1.0 mg/ml
Purification:	Affinity chromatography (> 95% (by SDS-PAGE)
Conjugation:	Unconjugated
Storage:	Store undiluted at 2-8°C for one month or (in aliquots) at -20°C for longer. Avoid repeated freezing and thawing.
Stability:	Shelf life: one year from despatch.
Predicted Protein Size:	~ 60, 169 kDa
Gene Name:	SRC proto-oncogene, non-receptor tyrosine kinase
Database Link:	Entrez Gene 20779 Mouse Entrez Gene 83805 Rat Entrez Gene 6714 Human P12931



[View online »](#)

Background:

Nuclear receptors for steroids, thyroid hormones and retinoic acids are liganddependent transcription factors that activate transcription through specific DNA binding sites in their target genes. Several related transcriptional coactivators and corepressors have been described that work in concert with the steroid receptor family to either induce or repress transcription from hormoneresponsive elements. This family includes GRIP1 (for GR interacting protein 1, also designated NCoA-2 or Tif2); SRC-1 (for steroid receptor coactivator-1, also designated NCoA-1); RAC3 (also designated AIB1, for amplified in breast cancer, or ACTR), which displays elevated expression in estrogen receptor positive ovarian and breast cancers; and p/CIP (for p300/CBP/co-integrator protein), which is required for the transcriptional activation of p300/CBPdependent transcription factors.

Synonyms:

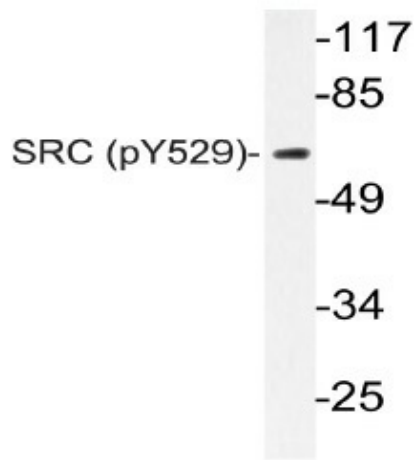
c-Src, pp60c-src

Protein Families:

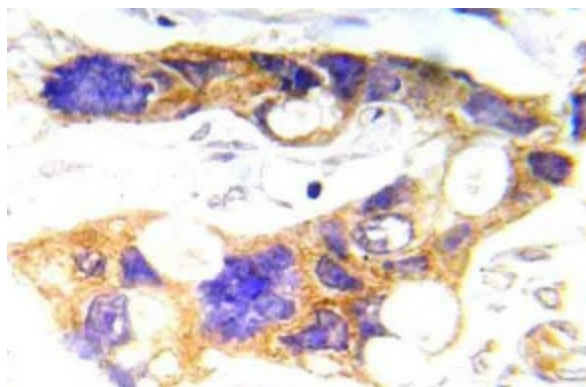
Druggable Genome, ES Cell Differentiation/IPS, Protein Kinase, Stem cell relevant signaling - JAK/STAT signaling pathway

Protein Pathways:

Adherens junction, Endocytosis, Epithelial cell signaling in Helicobacter pylori infection, ErbB signaling pathway, Focal adhesion, Gap junction, GnRH signaling pathway, Tight junction, VEGF signaling pathway

Product images:

Western blot (WB) analysis of p-c-RAF antibody (Cat.-No.: AP20905PU-N) in extracts from K562 cells.



Immunohistochemistry (IHC) analyzes of p-c-RAF antibody (Cat.-No.: AP20905PU-N) in paraffin-embedded human prostate carcinoma tissue.