

Product datasheet for **AP20900PU-M**

PDGF Receptor beta (PDGFRB) pTyr751 Rabbit Polyclonal Antibody

Product data:

Product Type:	Primary Antibodies
Applications:	IHC, WB
Recommended Dilution:	Western blot: 1/500 - 1/1000. Immunohistochemistry on paraffin sections 1/50 - 1/200.
Reactivity:	Human, Mouse, Rat
Host:	Rabbit
Clonality:	Polyclonal
Specificity:	This antibody detects endogenous levels of PDGFR beta protein only when phosphorylated at Tyr751.
Formulation:	Phosphate buffered saline (PBS), pH 7.2. State: Aff - Purified State: Liquid purified Ig fraction Preservative: 0.05% sodium azide
Concentration:	1.0 mg/ml
Purification:	Affinity chromatography (> 95% (by SDS-PAGE)
Conjugation:	Unconjugated
Storage:	Store undiluted at 2-8°C for one month or (in aliquots) at -20°C for longer. Avoid repeated freezing and thawing.
Stability:	Shelf life: one year from despatch.
Predicted Protein Size:	~ 124, 190 kDa
Gene Name:	platelet derived growth factor receptor beta
Database Link:	<u>Entrez Gene 18596 Mouse</u> <u>Entrez Gene 24629 Rat</u> <u>Entrez Gene 5159 Human</u> <u>P09619</u>



[View online »](#)

Background:

Platelet-derived growth factor (PDGF) is a mitogen for mesenchyme- and gliaderived cells. PDGF consists of two chains, A and B, which dimerize to form functionally distinct isoforms PDGF-AA, PDGF-AB and PDGF-BB. These three isoforms bind with different affinities to two receptor types, PDGFR-alpha and -beta, which are endowed with protein tyrosine kinase domains. PDGFR-alpha can bind to both A and B subunits of PDGF, while PDGFR-beta can only bind the B subunit. Ligand binding promotes either homo- or heterodimerization of the PDGF receptors in a specific manner. PDGF-AA induces the dimerization of two alpha receptors, PDGF-AB induces dimerization of alpha-alpha and alpha-beta, and PDGF-BB induces the formation of three types of dimers, alpha-alpha, alpha-beta and beta-beta. Translocation of the PDGFR-beta gene with the TEL gene is linked with chronic myelomonocytic leukemia (CMML), a myelodysplastic syndrome, and demonstrates the oncogenic potential of the PDGF receptors.

Synonyms:

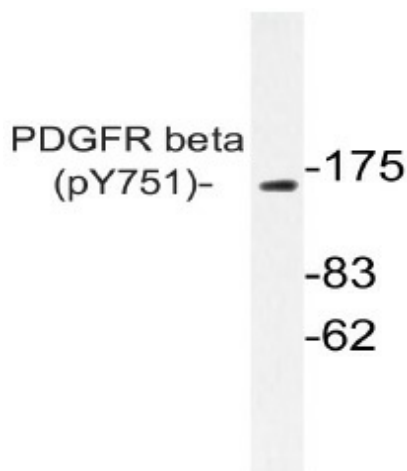
PDGF-R-beta, PDGF Receptor beta

Protein Families:

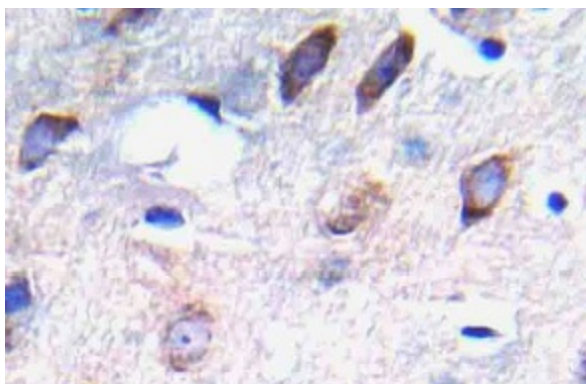
Druggable Genome, ES Cell Differentiation/IPS, Protein Kinase, Transmembrane

Protein Pathways:

Calcium signaling pathway, Colorectal cancer, Cytokine-cytokine receptor interaction, Focal adhesion, Gap junction, Glioma, MAPK signaling pathway, Melanoma, Pathways in cancer, Prostate cancer, Regulation of actin cytoskeleton

Product images:


Western blot (WB) analysis of p-PDGFR beta antibody (Cat.-No.: [AP20900PU-N]) in extracts from NIH/3T3 PDGF cells.



Immunohistochemistry (IHC) analyzes of p-PDGFR beta antibody (Cat.-No.: [AP20900PU-N]) in paraffin-embedded human brain tissue.