

Product datasheet for **AP20894PU-N**

Histone H2A.X (H2AFX) pSer139 Rabbit Polyclonal Antibody

Product data:

| | |
|-------------------------|---|
| Product Type: | Primary Antibodies |
| Applications: | IHC, WB |
| Recommended Dilution: | Western blot: 1/500 - 1/1000. Immunohistochemistry on paraffin sections 1/50 - 1/200. |
| Reactivity: | Human, Mouse, Rat |
| Host: | Rabbit |
| Clonality: | Polyclonal |
| Specificity: | This antibody detects endogenous levels of p-Histone H2A.X protein only when phosphorylated at Ser139. |
| Formulation: | Phosphate buffered saline (PBS), pH 7.2. State: Aff - Purified State: Liquid purified Ig fraction Preservative: 0.05% sodium azide |
| Concentration: | 1.0 mg/ml |
| Purification: | Affinity chromatography (> 95% (by SDS-PAGE) |
| Conjugation: | Unconjugated |
| Storage: | Store undiluted at 2-8°C for one month or (in aliquots) at -20°C for longer. Avoid repeated freezing and thawing. |
| Stability: | Shelf life: one year from despatch. |
| Predicted Protein Size: | ~ 15 kDa |
| Gene Name: | H2A histone family member X |
| Database Link: | <u>Entrez Gene 15270 Mouse</u> <u>Entrez Gene 500987 Rat</u> <u>Entrez Gene 3014 Human P16104</u> |



[View online »](#)

Background:

Histone H2A.X is a member of the Histone H2A family, which is involved in nucleosomal organization of chromatin. The Histone H2A.X gene is located in close proximity to the porphobilinogen deaminase (PBGD) gene in both mouse and human, and maps to 9 A5.2 and 11q23.3, respectively. H2A.X differs from the other members of the H2A family by the presence of a highly conserved C-terminal motif. It is rapidly phosphorylated in response to ionizing radiation and plays an important role in the recognition and repair of DNA double stranded breaks. The phosphorylated form of H2A.X, designated γ -H2A.X, forms nuclear foci at the heavy chain constant region of cells involved in class switch recombination (CSR), a region-specific DNA reaction that replaces one immunoglobulin heavy chain constant region gene with another. The phosphorylated γ -H2A.X is also thought to initiate subsequent repair factors, including Rad50, Rad51 and BRCA1.

Synonyms:

H2a/x, H2AFX, H2AX

Protein Families:

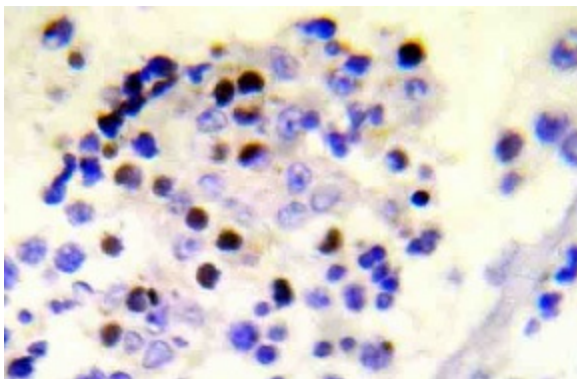
Druggable Genome

Protein Pathways:

Systemic lupus erythematosus

Product images:

Western blot (WB) analysis of p-Histone H2A.X antibody (Cat.-No.: [AP20594PU-N]) in extracts from 293 neocarzinostatin cells



Immunohistochemistry (IHC) analyzes of p-Histone H2A.X antibody (AP20894PU-N) in paraffin-embedded human malignant lymphoma tissue.