

Product datasheet for **AP20889PU-S**

FOXO3 pSer253 Rabbit Polyclonal Antibody

Product data:

Product Type:	Primary Antibodies
Applications:	IHC, WB
Recommended Dilution:	Western blot: 1/500-1/1000. Immunohistochemistry on Paraffin Sections: 1/50-1/200.
Reactivity:	Human, Mouse, Rat
Host:	Rabbit
Clonality:	Polyclonal
Immunogen:	Synthetic phosphopeptide derived from human FOXO3A around the phosphorylation site of Serine 253.
Specificity:	This antibody detects endogenous levels of p-FOXO3A protein when phosphorylated at Ser253.
Formulation:	Phosphate buffered saline (PBS), pH~7.2 State: Aff - Purified State: Liquid purified Ig fraction (> 95% pure by SDS-PAGE) Preservative: 0.05% Sodium Azide
Concentration:	1.0 mg/ml
Purification:	Affinity-chromatography using epitope-specific immunogen
Conjugation:	Unconjugated
Storage:	Store undiluted at 2-8°C for one month or (in aliquots) at -20°C for longer. Avoid repeated freezing and thawing.
Stability:	Shelf life: one year from despatch.
Predicted Protein Size:	~ 97 kDa
Gene Name:	forkhead box O3
Database Link:	Entrez Gene 56484 Mouse Entrez Gene 294515 Rat Entrez Gene 2309 Human O43524



[View online »](#)

Background:

FOXO3A belongs to the forkhead family of transcription factors which are characterized by a distinct forkhead domain. Forkhead transcription factors of the FoxO subfamily are emerging as a shared component among pathways regulating diverse cellular functions, such as differentiation, metabolism, proliferation, and survival. Their transcriptional output is controlled via a two-tiered mechanism of phosphorylation and acetylation. FOXO3A is a transcriptional activator which triggers apoptosis in the absence of survival factors. It recognizes and binds to the DNA sequence 5'-[AG]TAAA[TC]A-3'. FOXO3a has been shown to induce cell growth arrest to effect tumor suppression and FOXO3A genotype is strongly associated with human longevity.

Synonyms:

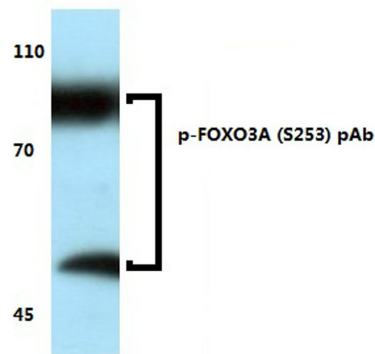
FOXO3A, AF6q21 protein

Protein Families:

Druggable Genome, Transcription Factors

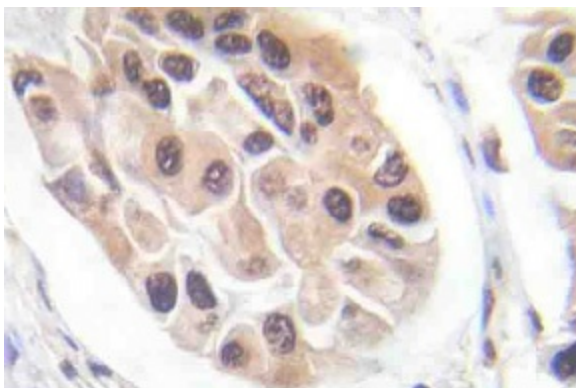
Protein Pathways:

Chemokine signaling pathway, Endometrial cancer, Neurotrophin signaling pathway, Non-small cell lung cancer

Product images:

Mouse heart tissue lysate
p-FOXO3A (S253) pAb at 1:500 dilution

Western blot (WB) analysis of p-FOXO3A antibody
(Cat.-No.: [AP20889PU-N])



Immunohistochemistry (IHC) analyzes of
Phospho-FOXO3A antibody (pSer253) in paraffin-
embedded human breast carcinoma tissue.