

## Product datasheet for **AP20869PU-N**

### NF2 pSer518 Rabbit Polyclonal Antibody

#### Product data:

Product Type:	Primary Antibodies
Applications:	IF, WB
Recommended Dilution:	<b>Western blot:</b> 1/500 - 1/1000. <b>Immunofluorescence:</b> 1/50 - 1/200.
Reactivity:	Human, Mouse, Rat
Host:	Rabbit
Clonality:	Polyclonal
Specificity:	This antibody detects endogenous levels of p-NF2 protein only when phosphorylated at Ser518.
Formulation:	Phosphate buffered saline (PBS), pH 7.2. State: Aff - Purified State: Liquid purified Ig fraction Preservative: 0.05% sodium azide
Concentration:	1.0 mg/ml
Purification:	Affinity chromatography (> 95% (by SDS-PAGE)
Conjugation:	Unconjugated
Storage:	Store undiluted at 2-8°C for one month or (in aliquots) at -20°C for longer. Avoid repeated freezing and thawing.
Stability:	Shelf life: one year from despatch.
Predicted Protein Size:	~ 70 kDa
Gene Name:	neurofibromin 2 (merlin)
Database Link:	<a href="#">Entrez Gene 18016 Mouse</a> <a href="#">Entrez Gene 25744 Rat</a> <a href="#">Entrez Gene 4771 Human</a> <a href="#">P35240</a>



[View online »](#)

**Background:**

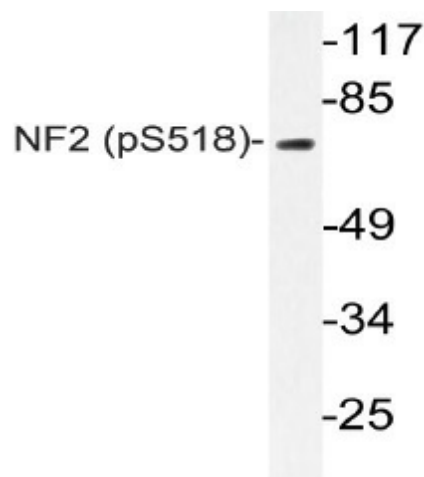
Neurofibromatosis type 2 (NF2) is a dominantly inherited disorder characterized by the occurrence of bilateral vestibular schwannomas and other central nervous system tumors, including multiple meningiomas. NF2 occurs in about 1 of 40,000 live births. The NF2 gene is highly penetrant; NF2-affected individuals have a 95% chance of developing bilateral vestibular schwannomas. NF2 is distinct from NF1, which is characterized by an incidence of 1 in 4000, maps to chromosome 17 and encodes a protein designated neurofibromin, which is a large protein with a GAP domain. Genetic linkage studies of both sporadic and familial tumors suggest that NF2 is caused by inactivation of a tumor suppressor gene that maps on chromosome 22q12 and encodes a 595 amino acid protein whose function appears to be mediated by interaction with the cytoskeleton.

**Synonyms:**

Neurofibromin-2, NF2, SCH, Schwannomin, Schwannomerlin

**Protein Families:**

Druggable Genome

**Product images:**

Western blot (WB) analyzes of p-NF2 antibody (Cat.-No.: AP20869PU-N) in extracts from Jurkat IFN cells.