

## Product datasheet for **AP20857PU-N**

### Cortactin (CTTN) pTyr421 Rabbit Polyclonal Antibody

#### Product data:

Product Type:	Primary Antibodies
Applications:	IHC, WB
Recommended Dilution:	<b>Western blot:</b> 1/500-1/1000. <b>Immunohistochemistry on Paraffin Sections:</b> 1/50-1/200.
Reactivity:	Human, Mouse, Rat
Host:	Rabbit
Clonality:	Polyclonal
Specificity:	This antibody detects endogenous levels of Cortactin protein only when phosphorylated at Tyr421.
Formulation:	Phosphate buffered saline (PBS), pH~7.2 State: Aff - Purified State: Liquid purified Ig fraction (> 95% pure by SDS-PAGE) Preservative: 0.05% Sodium Azide
Concentration:	1.0 mg/ml
Purification:	Affinity Chromatography using epitope-specific immunogen
Conjugation:	Unconjugated
Storage:	Store the antibody undiluted at 2-8°C for one month or (in aliquots) at -20°C for longer. Avoid repeated freezing and thawing.
Stability:	Shelf life: one year from despatch.
Predicted Protein Size:	~ 85.0 kDa
Gene Name:	Homo sapiens cortactin (CTTN), transcript variant 1
Database Link:	<a href="#">Entrez Gene 13043 Mouse</a> <a href="#">Entrez Gene 60465 Rat</a> <a href="#">Entrez Gene 2017 Human Q14247</a>



[View online »](#)

**Background:**

Cortactin (also designated Ems-1) is a filamentous Actin (FActin) binding protein. It has also been shown to be a substrate for Src p60. Cortactin contains tandem 37 amino acid repeats at the amino-terminus and an SH3 domain at the carboxy-terminus. The tandem repeats appear to be necessary for F-Actin binding. Tyrosine phosphorylation of Cortactin by Src p60 results in diminished F-Actin binding to Cortactin and reduced F-Actin cross-linking activity. Cortactin has also been shown to be phosphorylated in response to FGF-1. Cortactin exhibits abundant expression in megakaryocytes and platelets, and it may play a role in the maturation of megakaryocytes.

**Synonyms:**

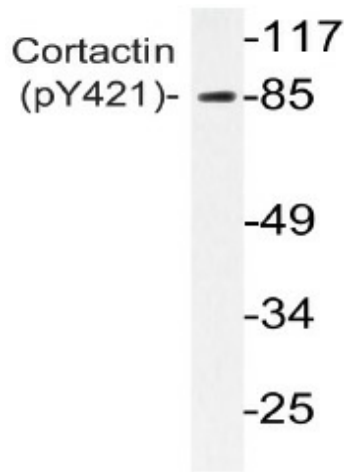
CTTN, EMS1, Amplaxin, Oncogene EMS1

**Protein Families:**

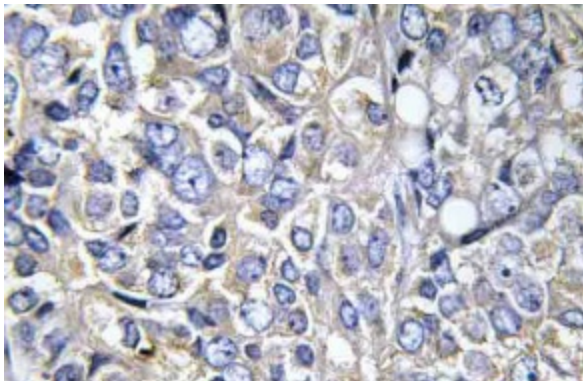
Druggable Genome

**Protein Pathways:**

Pathogenic Escherichia coli infection, Tight junction

**Product images:**


Western blot analysis of Cortactin antibody (Cat.-No AP20857PU-N) in extracts from 3T3 H2O2 cells



Immunohistochemistry analysis of Cortactin antibody (Cat.-No AP20857PU-N) in paraffin-embedded human prostate carcinoma tissue.