

Product datasheet for **AP20843PU-M**

BRCA1 pSer1423 Rabbit Polyclonal Antibody

Product data:

Product Type:	Primary Antibodies
Applications:	IHC
Recommended Dilution:	Immunohistochemistry on paraffin sections 1/50 - 1/200.
Reactivity:	Human, Rat
Host:	Rabbit
Clonality:	Polyclonal
Specificity:	This antibody detects endogenous levels of BRCA1 protein only when phosphorylated at Ser1423.
Formulation:	Phosphate buffered saline (PBS), pH 7.2. State: Aff - Purified State: Liquid purified Ig fraction Preservative: 0.05% sodium azide
Concentration:	1.0 mg/ml
Purification:	Affinity chromatography (> 95% (by SDS-PAGE)
Conjugation:	Unconjugated
Storage:	Store undiluted at 2-8°C for one month or (in aliquots) at -20°C for longer. Avoid repeated freezing and thawing.
Stability:	Shelf life: one year from despatch.
Predicted Protein Size:	~ 200 kDa
Gene Name:	BRCA1, DNA repair associated
Database Link:	Entrez Gene 497672 Rat Entrez Gene 672 Human P38398

[View online »](#)

Background:

In 1990, a breast cancer susceptibility gene designated BRCA1 was localized to chromosome 17q. Mutations within this gene are believed to account for approximately 45% of families with high incidence of breast cancer and at least 80% of families with increased incidence of both early-onset breast cancer and ovarian cancer. A second breast cancer susceptibility gene, BRCA2, located on chromosome 13q12-13, also confers a high incidence of breast cancer but, unlike BRCA1, does not confer a substantially elevated risk of ovarian cancer. The BRCA1 gene is expressed in numerous tissues, including breast and ovary, and encodes a predicted protein of 1863 amino acids. This protein contains a zinc finger domain in its amino terminal region, but is otherwise unrelated to any previously described proteins. Like many other genes involved in familial cancer, BRCA1 appears to encode a tumor suppressor, a protein that acts as a negative regulator of tumor growth.

Synonyms:

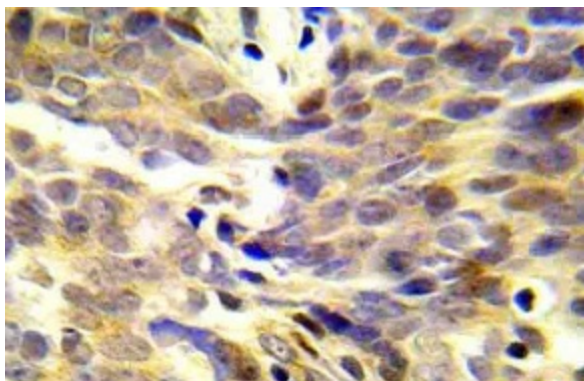
BRCA1; BRCC1; BROVCA1; IRIS; PSCP; RNF53

Protein Families:

Druggable Genome, Transcription Factors

Protein Pathways:

Ubiquitin mediated proteolysis

Product images:


Immunohistochemistry (IHC) analyzes of p-BRCA1 antibody (Cat.-No.: [AP20843PU-N]) in paraffin-embedded human lung adenocarcinoma tissue.