

## Product datasheet for **AP20837PU-N**

### Stathmin 1 (STMN1) pSer16 Rabbit Polyclonal Antibody

#### Product data:

Product Type:	Primary Antibodies
Applications:	IF, IHC, WB
Recommended Dilution:	<b>Western blot:</b> 1/500 - 1/1000. <b>Immunohistochemistry on paraffin sections</b> 1/50 - 1/200. <b>Immunofluorescence:</b> 1/50 - 1/200.
Reactivity:	Human, Mouse, Rat
Host:	Rabbit
Clonality:	Polyclonal
Specificity:	This antibody detects endogenous levels of Op18 protein only when phosphorylated at Ser16.
Formulation:	Phosphate buffered saline (PBS), pH 7.2. State: Aff - Purified State: Liquid purified Ig fraction Preservative: 0.05% sodium azide
Concentration:	1.0 mg/ml
Purification:	Affinity chromatography (> 95% (by SDS-PAGE)
Conjugation:	Unconjugated
Storage:	Store undiluted at 2-8°C for one month or (in aliquots) at -20°C for longer. Avoid repeated freezing and thawing.
Stability:	Shelf life: one year from despatch.
Predicted Protein Size:	~ 19 kDa
Gene Name:	stathmin 1
Database Link:	<u><a href="#">Entrez Gene 16765 Mouse</a></u> <u><a href="#">Entrez Gene 29332 Rat</a></u> <u><a href="#">Entrez Gene 3925 Human</a></u> <u><a href="#">P16949</a></u>



[View online »](#)

**Background:**

Oncoprotein 18 (Op18) is a regulator of microtubule (MT) dynamics. Op18 is a target for both cell cycle and cell surface receptor-coupled kinase systems, and phosphorylation of Op18 on specific combinations of amino acid residues has been shown to switch off MT-destabilizing activity of Op18. Induced expression of the catalytic subunit of cAMP-dependent protein kinase (PKA) results in a dramatic increase in cellular MT polymer content concomitant with phosphorylation and partial degradation of Op18. Phosphorylation of Op18 on two specific sites, Serine 16 and Serine 63, is necessary and sufficient for PKA to switch off Op18 activity in intact cells. PKA phosphorylation down-regulates the MT-destabilizing activity of Op18, which in turn promotes increased Tubulin polymerization. Op18 has the potential to regulate the MT system in response to external signals such as cAMP-linked agonists.

**Synonyms:**

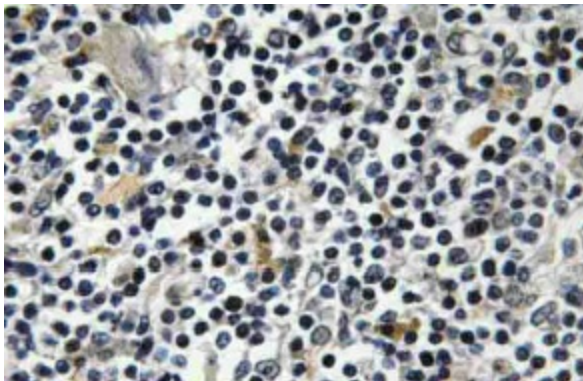
LAP18, OP18, Phosphoprotein p19, pp19, Leukemia-associated phosphoprotein p18, Oncoprotein 18, Op18, pp17, Prosolin, Metablastin, Protein Pr22

**Protein Pathways:**

MAPK signaling pathway

**Product images:**


Western blot (WB) analyzes of Op18 antibody (Cat.-No.: AP20837PU-N) in extracts from 293 cells.



Immunohistochemistry (IHC) analyzes of p-Op18 antibody (Cat.-No.: AP20837PU-N) in paraffin-embedded human thymus gland tissue.