

Product datasheet for **AP20833PU-M**

RPS6 pSer235 Rabbit Polyclonal Antibody

Product data:

Product Type:	Primary Antibodies
Applications:	IF, WB
Recommended Dilution:	Immunofluorescence: 1/50 - 1/200. Western blot: 1/500 - 1/1000.
Reactivity:	Human, Mouse, Rat
Host:	Rabbit
Clonality:	Polyclonal
Specificity:	This antibody detects endogenous levels of Ribosomal Protein S6 protein only when phosphorylated at Ser235.
Formulation:	Phosphate buffered saline (PBS), pH 7.2. State: Aff - Purified State: Liquid purified Ig fraction Preservative: 0.05% sodium azide
Concentration:	1.0 mg/ml
Purification:	Affinity chromatography (> 95% (by SDS-PAGE)
Conjugation:	Unconjugated
Storage:	Store undiluted at 2-8°C for one month or (in aliquots) at -20°C for longer. Avoid repeated freezing and thawing.
Stability:	Shelf life: one year from despatch.
Predicted Protein Size:	~ 32 kDa
Gene Name:	ribosomal protein S6
Database Link:	<u>Entrez Gene 20104 Mouse</u> <u>Entrez Gene 29304 Rat</u> <u>Entrez Gene 6194 Human P62753</u>



[View online »](#)

Background:

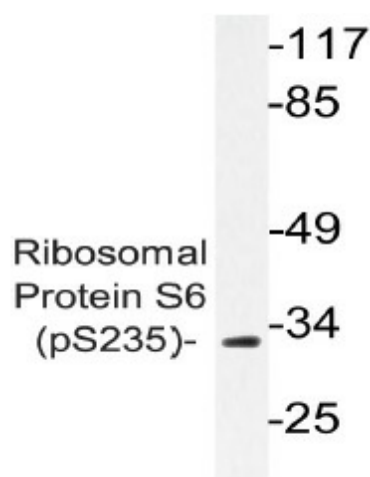
The genes encoding for mammalian ribosomal proteins comprise multigene families that consist predominantly of multiple processed pseudogenes and one functional introncontaining gene within their coding regions. The RPS6 gene gives rise to Ribosomal Protein S6 (also designated RPS6). RPS6 is the major substrate of protein kinases in eukaryotic ribosomes. Sequence comparison has identified RPS6 as the equivalent of the Ribosomal Protein S10 from *Saccharomyces cerevisiae*. The sequence comparison of ribosomal proteins from evolutionarily distant eukaryotes, such as yeast and human, indicates that the structure and probably the function of RPS6 has been highly conserved. RPS6 phosphorylation is stimulated by growth factors, tumor promoting agents and mitogens. It is dephosphorylated at growth arrest.

Synonyms:

Phosphoprotein NP33, 40S ribosomal protein S6

Protein Pathways:

Insulin signaling pathway, mTOR signaling pathway, Ribosome

Product images:


Western blot (WB) analyzes of p-Ribosomal Protein S6 antibody (Cat.-No.: [AP20833PU-N]) in extracts from K562 TNF cells.