

## Product datasheet for **AP20826PU-N**

### beta Catenin (CTNNB1) pSer33 Rabbit Polyclonal Antibody

#### Product data:

Product Type:	Primary Antibodies
Applications:	IF, IHC
Recommended Dilution:	<b>Immunohistochemistry on paraffin sections</b> 1/50 - 1/200. <b>Immunofluorescence:</b> 1/50 - 1/200.
Reactivity:	Human, Mouse, Rat
Host:	Rabbit
Clonality:	Polyclonal
Specificity:	This antibody detects endogenous levels of Catenin-beta protein only when phosphorylated at Ser33.
Formulation:	Phosphate buffered saline (PBS), pH 7.2. State: Aff - Purified State: Liquid purified Ig fraction Preservative: 0.05% sodium azide
Concentration:	1.0 mg/ml
Purification:	Affinity chromatography (> 95% (by SDS-PAGE)
Conjugation:	Unconjugated
Storage:	Store undiluted at 2-8°C for one month or (in aliquots) at -20°C for longer. Avoid repeated freezing and thawing.
Stability:	Shelf life: one year from despatch.
Predicted Protein Size:	~ 92 kDa
Gene Name:	catenin beta 1
Database Link:	<a href="#">Entrez Gene 12387 Mouse</a> <a href="#">Entrez Gene 84353 Rat</a> <a href="#">Entrez Gene 1499 Human</a> <a href="#">P35222</a>



[View online »](#)

**Background:**

$\beta$ -Catenin is a key downstream effector in the Wnt signaling pathway. It is implicated in two major biological processes in vertebrates: early embryonic development and tumorigenesis. CK1 phosphorylates  $\beta$ -catenin at Ser45. This phosphorylation event primes  $\beta$ -catenin for subsequent phosphorylation by GSK-3 $\beta$ . GSK-3 $\beta$  destabilizes  $\beta$ -catenin by phosphorylating it at Ser33, Ser37, and Thr41. Mutations at these sites result in the stabilization of  $\beta$ -catenin protein levels and have been found in many tumor cell lines.

**Synonyms:**

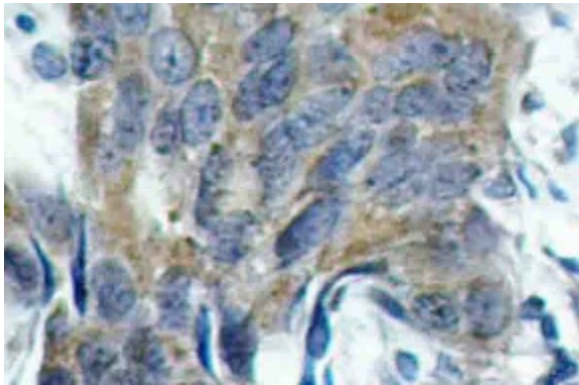
CTNNB1, CTNNB, Beta-catenin

**Protein Families:**

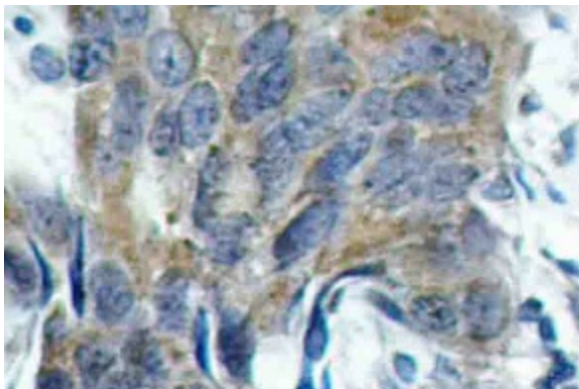
Druggable Genome, ES Cell Differentiation/IPS, Transcription Factors

**Protein Pathways:**

Adherens junction, Arrhythmogenic right ventricular cardiomyopathy (ARVC), Basal cell carcinoma, Colorectal cancer, Endometrial cancer, Focal adhesion, Leukocyte transendothelial migration, Melanogenesis, Pathogenic Escherichia coli infection, Pathways in cancer, Prostate cancer, Thyroid cancer, Tight junction, Wnt signaling pathway

**Product images:**

Immunohistochemistry (IHC) analyzes of p-Catenin-beta antibody (Cat.-No.: AP20826PU-N) in paraffin-embedded human colon carcinoma tissue.



Immunohistochemistry (IHC) analyzes of p-Catenin-beta antibody (Cat.-No.: AP20826PU-N) in paraffin-embedded human colon carcinoma tissue.