

Product datasheet for **AP20824PU-S**

IKB alpha (NFKBIA) pTyr42 Rabbit Polyclonal Antibody

Product data:

Product Type:	Primary Antibodies
Applications:	IHC, WB
Recommended Dilution:	Western blot: 1/500 - 1/1000. Immunohistochemistry on paraffin sections 1/50 - 1/200.
Reactivity:	Human, Mouse, Rat
Host:	Rabbit
Clonality:	Polyclonal
Specificity:	This antibody detects endogenous levels of I kappa B-alpha protein only when phosphorylated at Tyr42.
Formulation:	Phosphate buffered saline (PBS), pH 7.2. State: Aff - Purified State: Liquid purified Ig fraction Preservative: 0.05% sodium azide
Concentration:	1.0 mg/ml
Purification:	Affinity chromatography (> 95% (by SDS-PAGE)
Conjugation:	Unconjugated
Storage:	Store undiluted at 2-8°C for one month or (in aliquots) at -20°C for longer. Avoid repeated freezing and thawing.
Stability:	Shelf life: one year from despatch.
Predicted Protein Size:	~ 36 kDa
Gene Name:	NFKB inhibitor alpha
Database Link:	<u>Entrez Gene 18035 Mouse</u> <u>Entrez Gene 25493 Rat</u> <u>Entrez Gene 4792 Human P25963</u>



[View online »](#)

Background:

On the basis of both functional and structural considerations, members of the I kappa B family of proteins can be divided into four groups. The first of these groups, I kappa B-alpha (a 35-37 kDa protein), includes the avian protein pp40 and the mammalian MAD-3, both of which inhibit binding of p50-p65 NFkappaB complex or Rel protein to their cognate binding sites but do not inhibit the binding of p50 homodimer to kappaB sites, suggesting that the I kappa B-alpha family binds to the p65 subunit of p50-p65 heterocomplex through ankyrin repeats. The second member of the I kappa B family is represented by a 45 kDa protein designated I kappa B-beta. The third group of I kappa B proteins is represented by I kappa B-gamma, a 70 kDa protein identical in sequence with the Cterminal domain of the p110 precursor of NFkappaB p50 and expressed predominantly in lymphoid cells.

Synonyms:

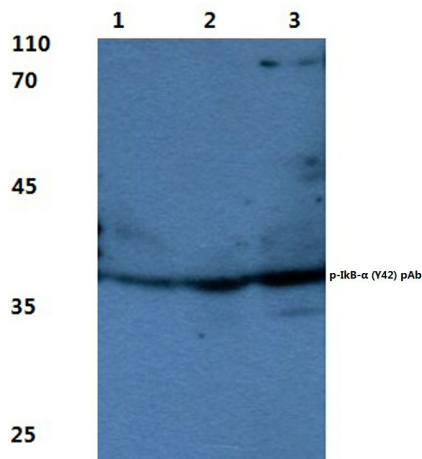
I-kappa-B-alpha, MAD3, NFKBI, I kappa B-alpha, I kappa Balpha, I kB-alpha

Protein Families:

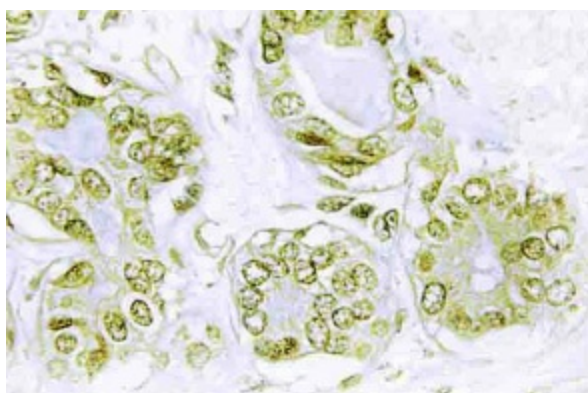
Druggable Genome

Protein Pathways:

Adipocytokine signaling pathway, Apoptosis, B cell receptor signaling pathway, Chemokine signaling pathway, Chronic myeloid leukemia, Cytosolic DNA-sensing pathway, Epithelial cell signaling in Helicobacter pylori infection, Neurotrophin signaling pathway, NOD-like receptor signaling pathway, Pathways in cancer, Prostate cancer, RIG-I-like receptor signaling pathway, Small cell lung cancer, T cell receptor signaling pathway, Toll-like receptor signaling pathway

Product images:

Western blot (WB) analysis of p-IkB-a antibody (Cat.-No.: [AP20824PU-N]) at 1/500 dilution. Lane 1: Jurkat whole cell lysate treated with IL-1 Beta. Lane 2: H9C2 whole cell lysate treated with LPS. Lane 3: RAW264.7 whole cell lysate treated with LPS. A band labeled 'p-IkB-α (Y42) pAb' is visible at approximately 45 kDa in all three lanes.



Immunohistochemistry (IHC) analyzes of p-IkappaB-alpha antibody (Cat.-No.: [AP20824PU-N]) in paraffin-embedded human breast carcinoma tissue.